



Product Model Number

CKO-CC20-075026-0403

✓ Model Number Definitions

CKO-XXXX-XXXXXX-XXXX

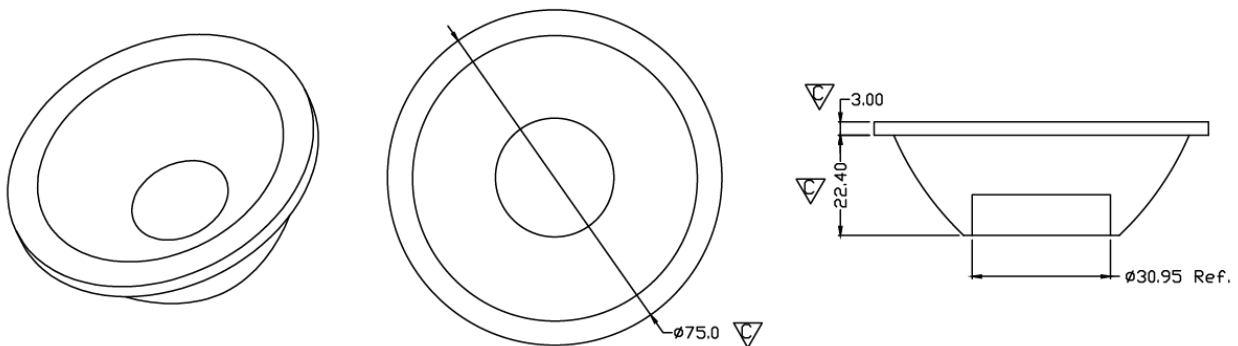


- A. Chun Kuang Optics Corp. Product
- B. Product Type: product abbreviation
Ex:
CH→CoB High Intensity
CC→CoB Compact
CS→Soft Shading for CoB LED
HC→Holder for CoB LED

- C. Identity Code
- D. Lens / Fixture Size
Ex: 075026=Φ75mm / Thickness=26mm (round up)
- E. Serial Numbers

The lens datasheet is applicable for **Luminus LED**, that manufactured by Chun Kuang Optics Corp.

✓ Dimensions (mm) : Φ75 x 25.4



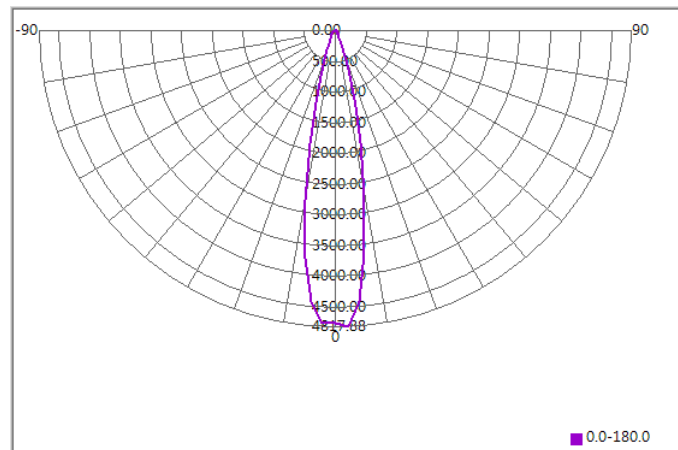
▽:Critical Dimension



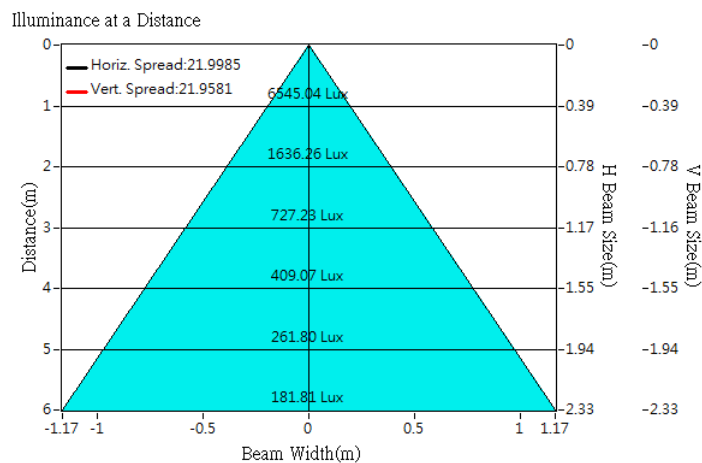
Optical Characteristics

Model Number	CKO-CC20-075026-0403		<p>"H" definition</p>
LED	CXM-9-AC30		
LES / LED Size	Φ 9.6 mm		
FWHM (D50)	22°		
Field Angle (D10)	42°		
H (distance)	3.65 mm		
Dimension	Φ =45 mm, Thickness=20.9 mm		
Luminous Flux	1376 lm	Measured @ 12.1 W	
Material	PC / UL94V2		

cd/klm



Illuminance At Distances

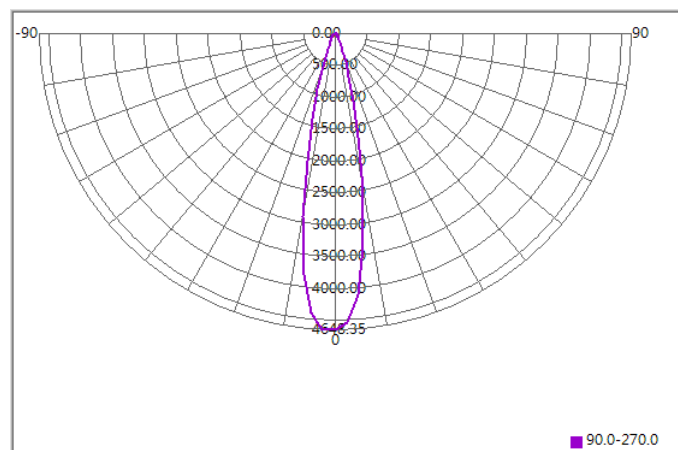




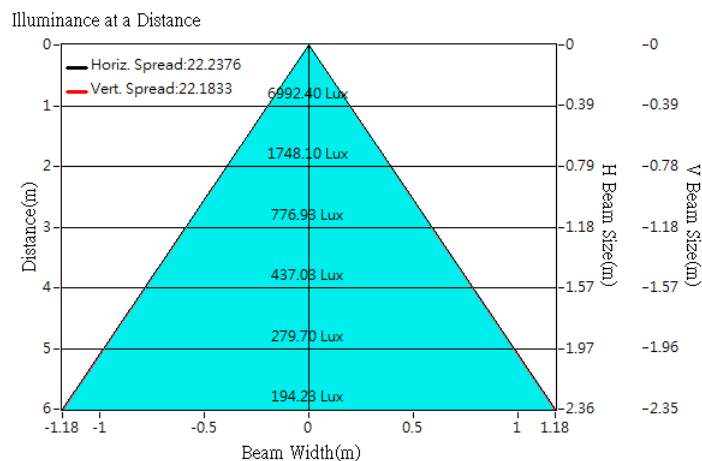
Optical Characteristics

Model Number	CKO-CC20-075026-0403		<p>"H" definition</p>
LED	CXM-9-AC40		
LES / LED Size	Φ 9.8 mm		
FWHM (D50)	22°		
Field Angle (D10)	42°		
H (distance)	3.65 mm		
Dimension	Φ =45 mm, Thickness=20.9 mm		
Luminous Flux	1505 lm	Measured @ 12.1 W	
Material	PC / UL94V2		

cd/klm



Illuminance At Distances

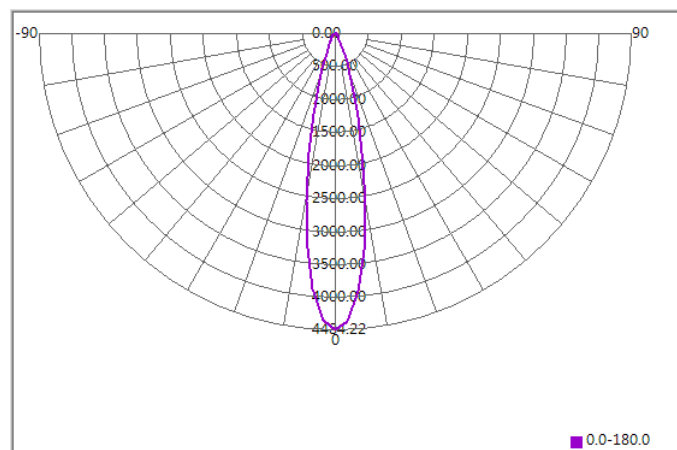




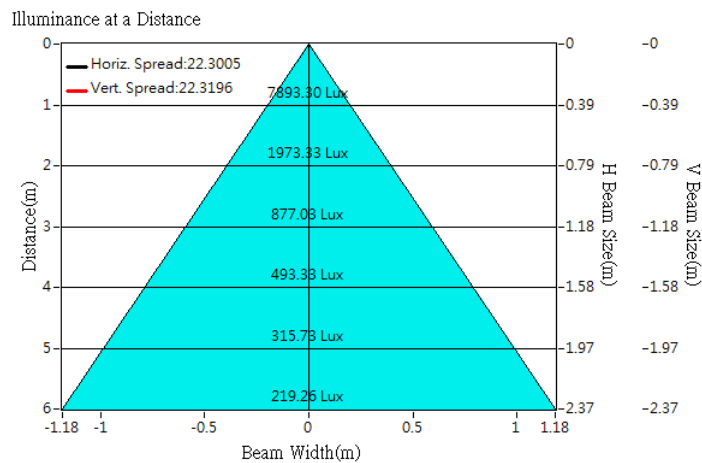
Optical Characteristics

Model Number	CKO-CC20-075026-0403		<p>"H" definition</p> <p>LES CoB</p>
LED	CXM-11-AC30		
LES / LED Size	Φ 11.7 mm		
FWHM (D50)	22°		
Field Angle (D10)	44°		
H (distance)	3.65 mm		
Dimension	Φ =45 mm, Thickness=20.9 mm		
Luminous Flux	1760 lm	Measured @ 15 W	
Material	PC / UL94V2		

cd/klm



Illuminance At Distances

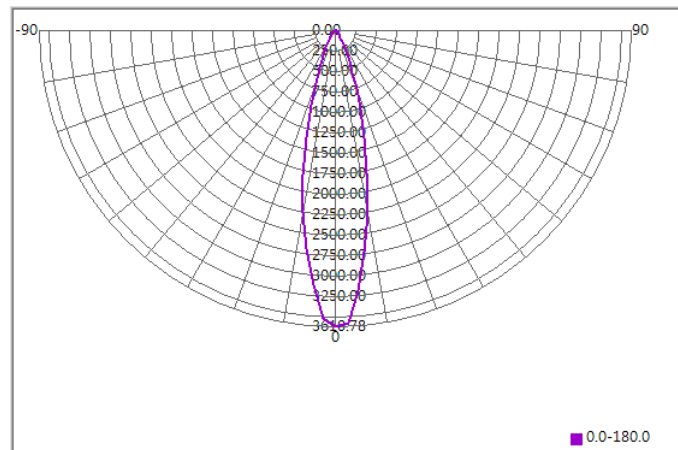




Optical Characteristics

Model Number	CKO-CC20-075026-0403		<p>"H" definition</p> <p>LES CoB</p>
LED	CLM-14-AC40		
LES / LED Size	Φ 14.5 mm		
FWHM (D50)	25°		
Field Angle (D10)	51°		
H (distance)	3.65 mm		
Dimension	Φ =75 mm, Thickness=33 mm		
Luminous Flux	2569 lm	Measured @16.7 W	
Material	PC / UL94V2		

cd/klm



Illuminance At Distances

