

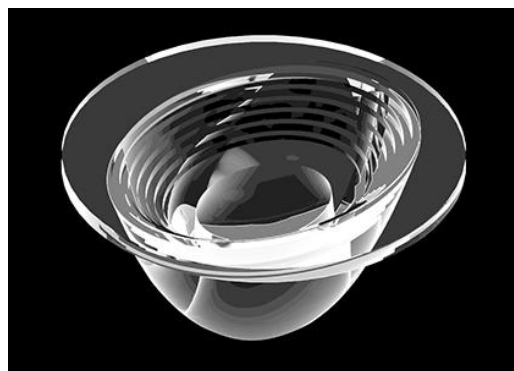


## Product Model Number

**CKO-CH15-045021-1670**

### ✓ Model Number Definitions

**CKO-XXXX-XXXXXX-XXXX**

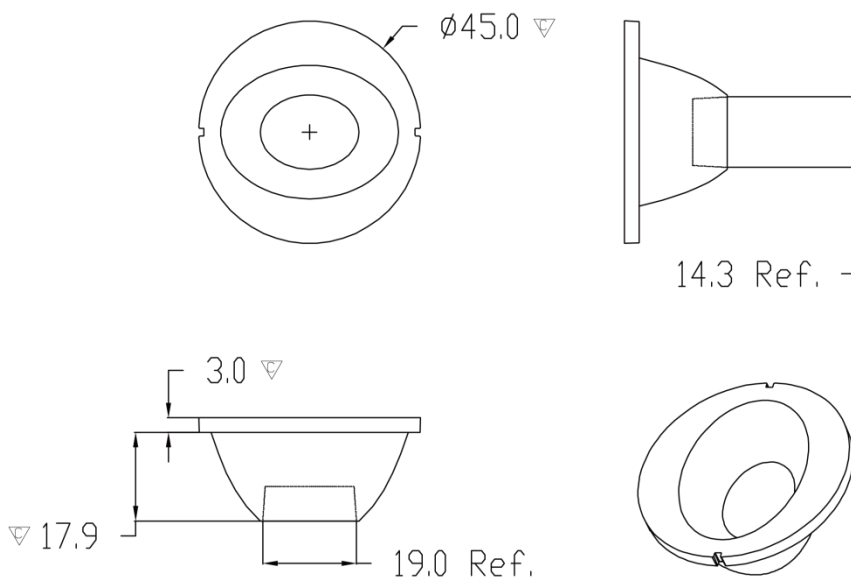


- A. Chun Kuang Optics Corp. Product
- B. Product Type: product abbreviation  
Ex:  
CH→CoB High Intensity  
CC→CoB Compact  
CS→Soft Shading for CoB LED  
HC→Holder for CoB LED

- C. Identity Code
- D. Lens / Fixture Size  
Ex: 075026=Φ75mm / Thickness=26mm (round up)
- E. Serial Numbers

The lens datasheet is applicable for **Luminus LED**, that manufactured by Chun Kuang Optics Corp.

### ✓ Dimensions (mm) : Φ45 x 20.9



▽:Critical Dimension

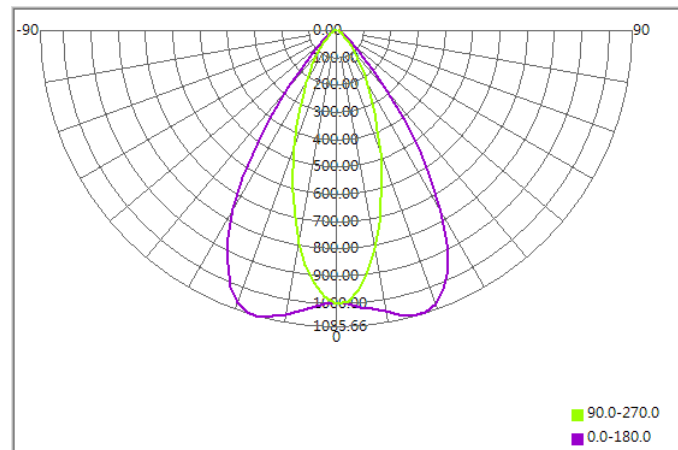




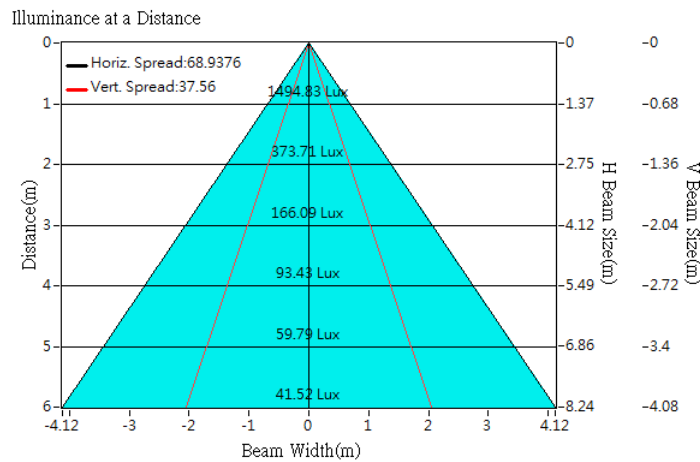
## Optical Characteristics

Model Number	CKO-CH15-045021-1670		<p>"H" definition</p>
LED	CXM-9-AC30		
LES / LED Size	Φ 9.6 mm		
FWHM (D50)	37°x69°		
Field Angle (D10)	82°x94°		
H (distance)	2.5mm		
Dimension	Φ =45 mm, Thickness=20.9 mm		
Luminous Flux	1483 lm	Measured @ 12.1 W	
Material	PC / UL94V2		

## cd/klm



## Illuminance At Distances

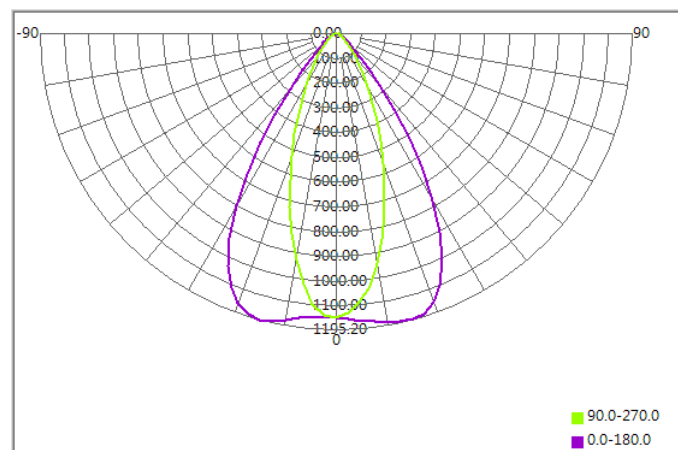




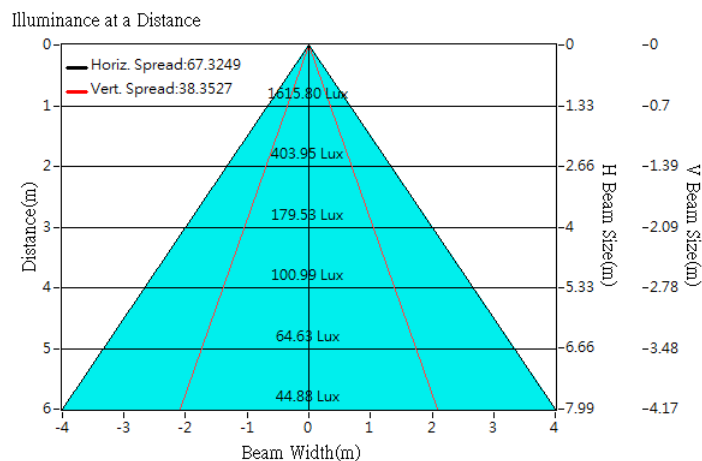
## Optical Characteristics

Model Number	CKO-CH15-045021-1670		<p>"H" definition</p>
LED	<b>CXM-9-AC40</b>		
LES / LED Size	Φ 9.8 mm		
FWHM (D50)	38°x67°		
Field Angle (D10)	80°x93°		
H (distance)	2.5mm		
Dimension	Φ =45 mm, Thickness=20.9 mm		
Luminous Flux	1410 lm	Measured @ 12.1 W	
Material	PC / UL94V2		

## cd/klm



## Illuminance At Distances

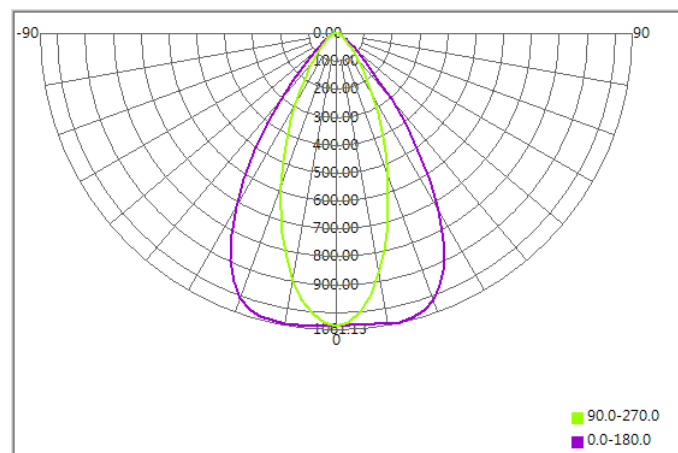




## Optical Characteristics

Model Number	CKO-CH15-045021-1670		<p>"H" definition</p>
LED	<b>CXM-11-AC30</b>		
LES / LED Size	Φ 11.7 mm		
FWHM (D50)	42°x69°		
Field Angle (D10)	85°x98°		
H (distance)	2.5mm		
Dimension	Φ =45 mm, Thickness=20.9 mm		
Luminous Flux	1577 lm	Measured @ 15.4 W	
Material	PC / UL94V2		

## cd/klm



## Illuminance At Distances

