



## Product Model Number

CKO-CH15-060027-4305

### ✓ Model Number Definitions

**CKO-XXXX-XXXXXX-XXXX**

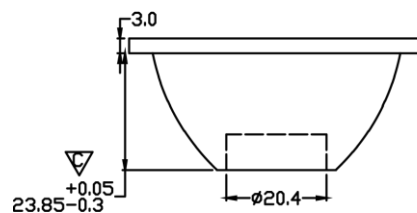
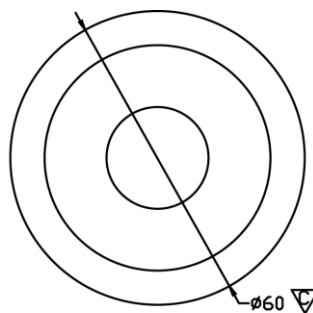


- A. Chun Kuang Optics Corp. Product
- B. Product Type: product abbreviation  
Ex:  
CH→CoB High Intensity  
CC→CoB Compact  
CS→Soft Shading for CoB LED  
HC→Holder for CoB LED

- C. Identity Code
- D. Lens / Fixture Size  
Ex: 075026=Φ75mm / Thickness=26mm (round up)
- C. Serial Numbers

The lens datasheet is applicable for **Citizen LED**, that manufactured by Chun Kuang Optics Corp.

### ✓ Dimensions (mm) : Φ60 x 26.85



▽:Critical Dimension

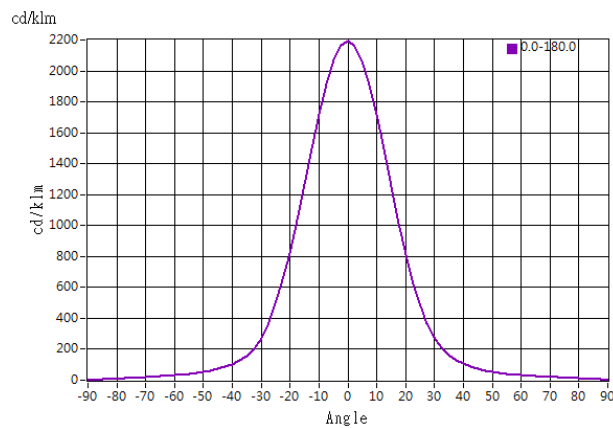




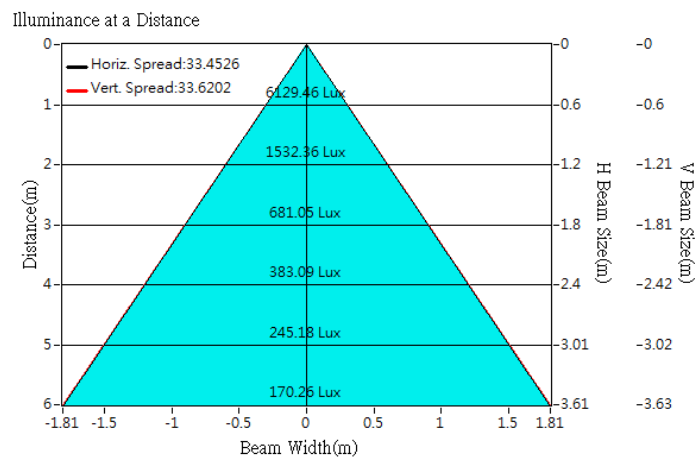
## Optical Characteristics

Model Number	CKO-CH15-060027-4305	<p>"H" definition</p>
LED	<b>CLU 711</b>	
LES / LED Size	Φ 8.5 mm	
FWHM (D50)	33°	
Field Angle (D10)	64°	
H (distance)	3.65 mm	
Dimension	Φ =60 mm, Thickness=26.85 mm	
Luminous Flux	2793 lm	
Material	PC / UL94V2	

## cd/klm

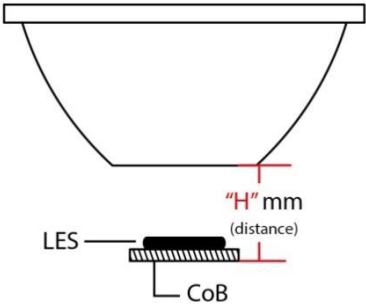


## Illuminance At Distances

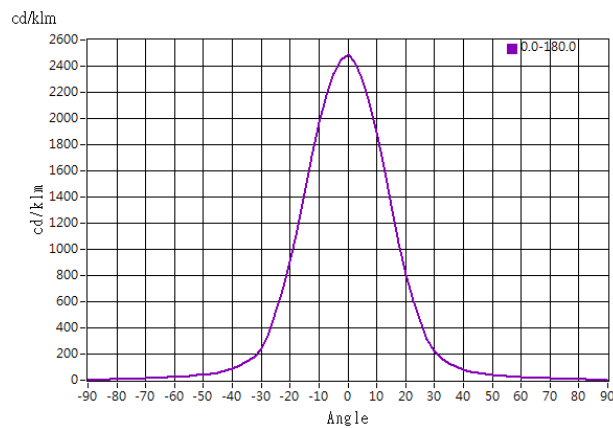




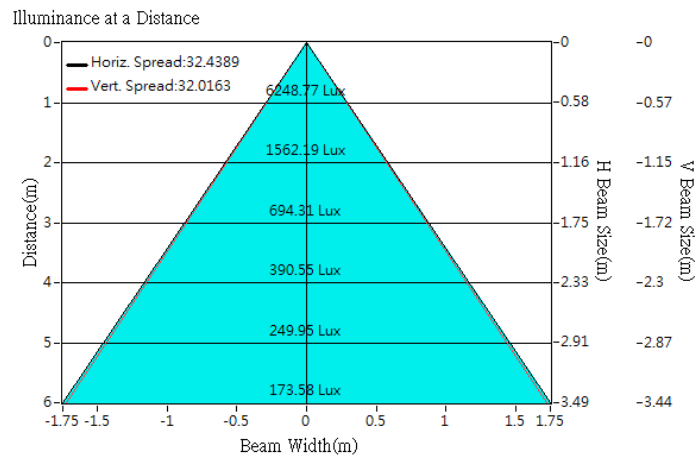
## Optical Characteristics

Model Number	CKO-CH15-060027-4305		<p>"H" definition</p> 
LED	<b>CLU 710</b>		
LES / LED Size	Φ 8.5 mm		
FWHM (D50)	32°		
Field Angle (D10)	59°		
H (distance)	3.65 mm		
Dimension	Φ =60 mm, Thickness=26.85 mm		
Luminous Flux	2512 lm	Measured @ 26.2 W	
Material	PC / UL94V2		

## cd/klm



## Illuminance At Distances

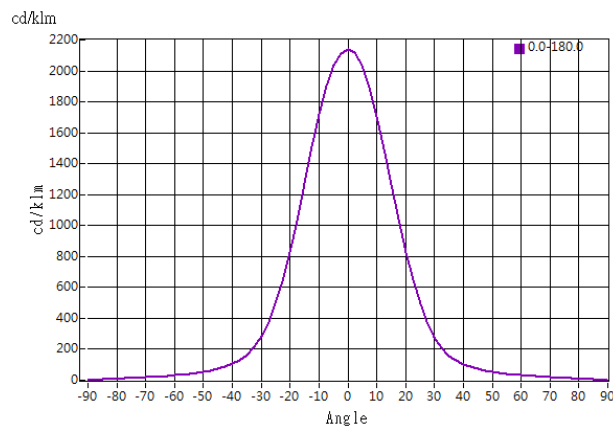




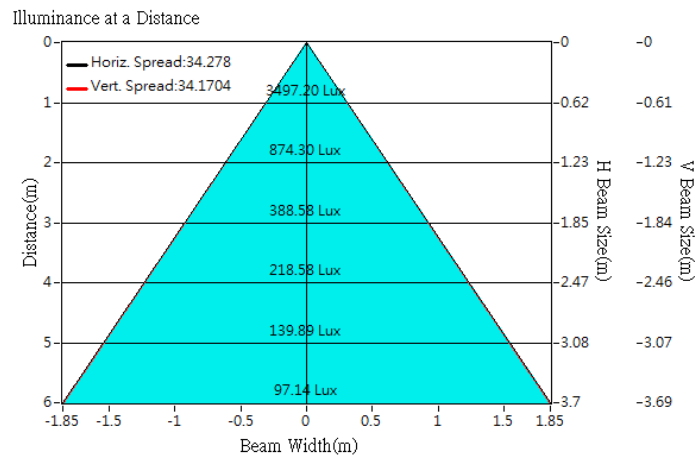
## Optical Characteristics

Model Number	CKO-CH15-060027-4305	<p>"H" definition</p> <p>LES CoB</p>
LED	<b>CLU 028</b>	
LES / LED Size	Φ 9.8 mm	
FWHM (D50)	34°	
Field Angle (D10)	65°	
H (distance)	3.65 mm	
Dimension	Φ =60 mm, Thickness=26.85 mm	
Luminous Flux	1634 lm	
Material	PC / UL94V2	

## cd/klm



## Illuminance At Distances

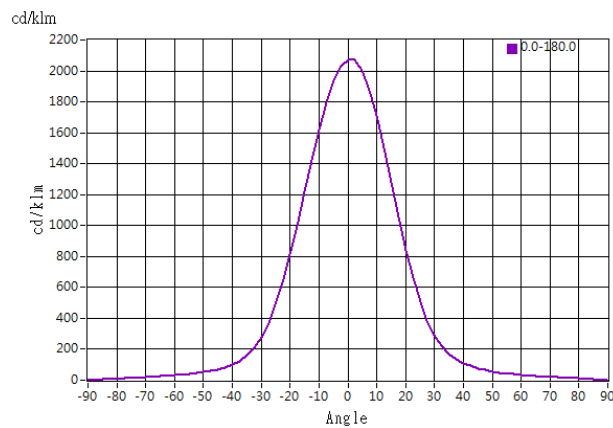




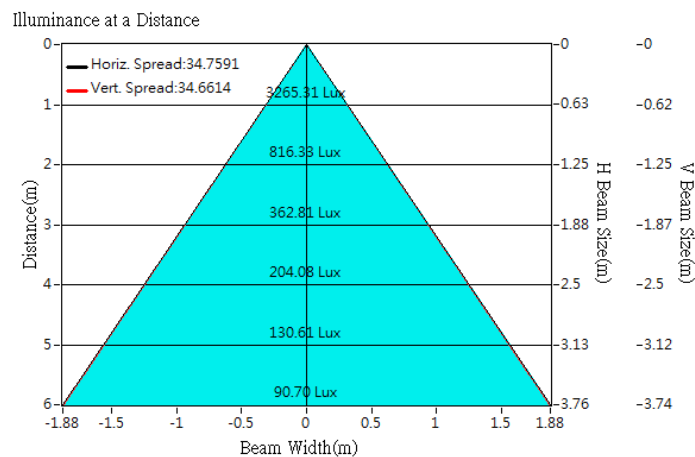
## Optical Characteristics

Model Number	CKO-CH15-060027-4305	<p>"H" definition</p>
LED	<b>CLU 026</b>	
LES / LED Size	Φ 9.8 mm	
FWHM (D50)	35°	
Field Angle (D10)	66°	
H (distance)	3.65 mm	
Dimension	Φ =60 mm, Thickness=26.85 mm	
Luminous Flux	1575 lm	
Material	PC / UL94V2	

## cd/klm



## Illuminance At Distances

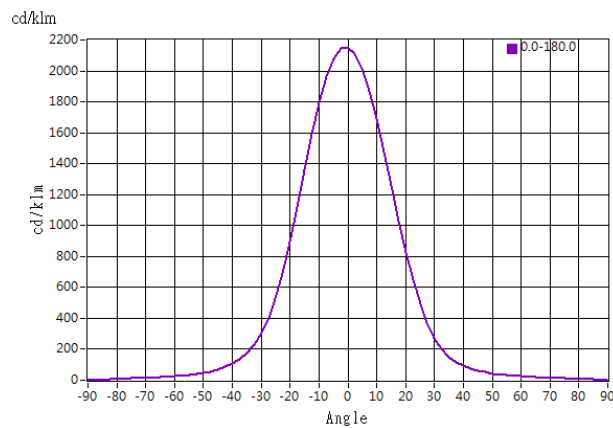




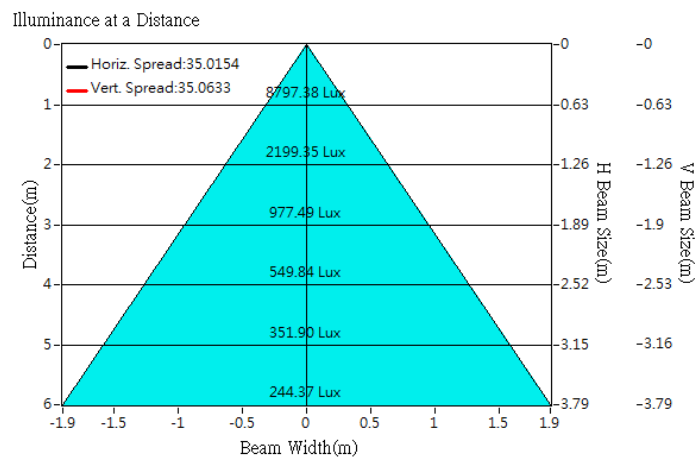
## Optical Characteristics

Model Number	CKO-CH15-060027-4305		<p>"H" definition</p>
LED	CLU 721		
LES / LED Size	Φ 11 mm		
FWHM (D50)	35°		
Field Angle (D10)	65°		
H (distance)	3.65 mm		
Dimension	Φ =60 mm, Thickness=26.85 mm		
Luminous Flux	4100 lm	Measured @ 38.8 W	
Material	PC / UL94V2		

## cd/klm



## Illuminance At Distances

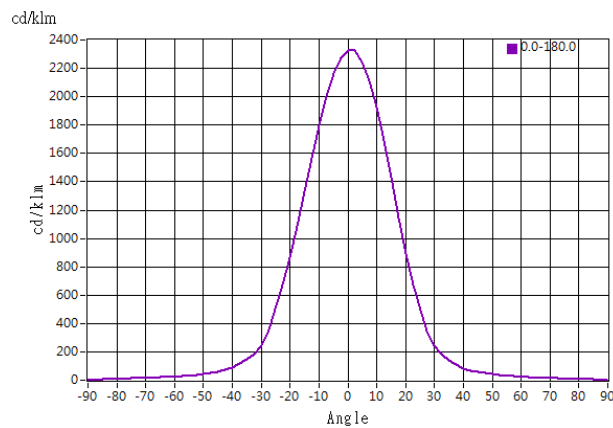




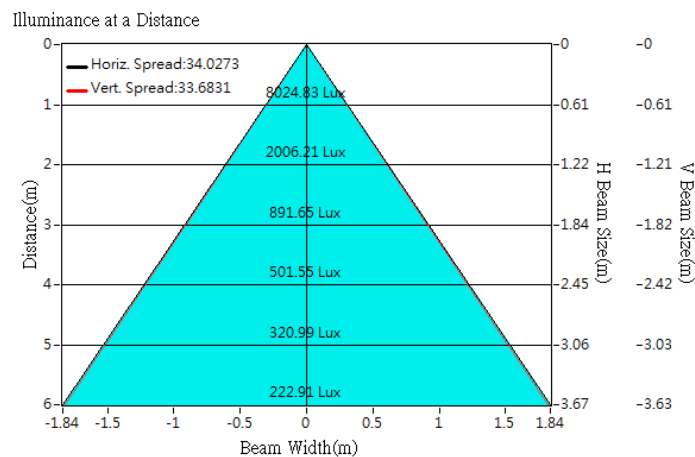
## Optical Characteristics

Model Number	CKO-CH15-060027-4305		<p>"H" definition</p>
LED	<b>CLU 720</b>		
LES / LED Size	Φ 11 mm		
FWHM (D50)	34°		
Field Angle (D10)	61°		
H (distance)	3.65 mm		
Dimension	Φ =60 mm, Thickness=26.85 mm		
Luminous Flux	3446 lm	Measured @ 38.5 W	
Material	PC / UL94V2		

## cd/klm



## Illuminance At Distances

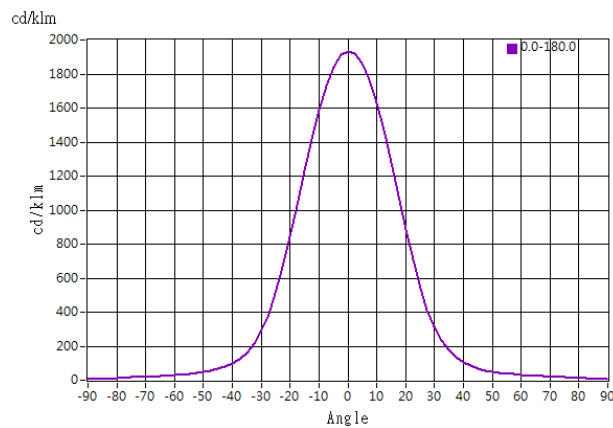




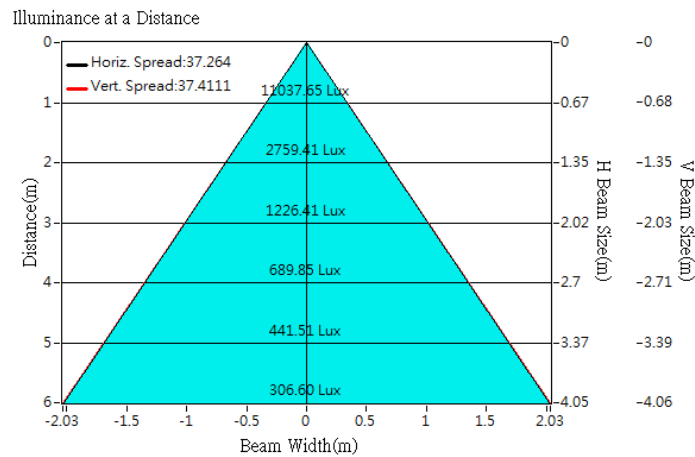
## Optical Characteristics

Model Number	CKO-CH15-060027-4305	<p>"H" definition</p>
LED	<b>CLU 730</b>	
LES / LED Size	Φ 13 mm	
FWHM (D50)	37°	
Field Angle (D10)	68°	
H (distance)	3.65 mm	
Dimension	Φ =60 mm, Thickness=26.85 mm	
Luminous Flux	5704 lm	
Material	PC / UL94V2	

## cd/klm



## Illuminance At Distances

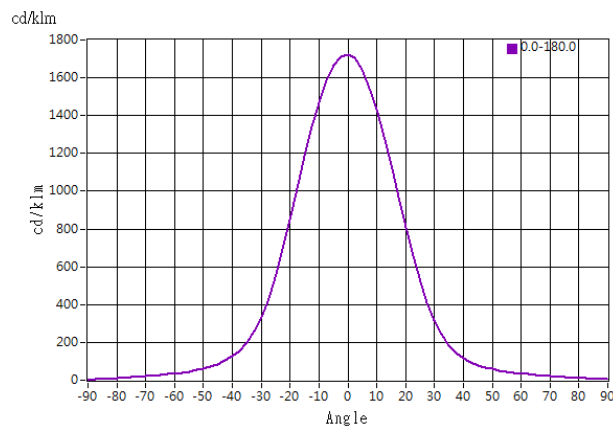




## Optical Characteristics

Model Number	CKO-CH15-060027-4305	<p>"H" definition</p>
LED	<b>CLU 038</b>	
LES / LED Size	Φ 14.5 mm	
FWHM (D50)	39°	
Field Angle (D10)	72°	
H (distance)	3.65 mm	
Dimension	Φ =60 mm, Thickness=26.85 mm	
Luminous Flux	2746 lm	
Material	PC / UL94V2	

## cd/klm



## Illuminance At Distances

