



## Product Model Number

**CKO-CH17-060033-0205**

### ✓ Model Number Definitions

**CKO-XXXX-XXXXXX-XXXX**

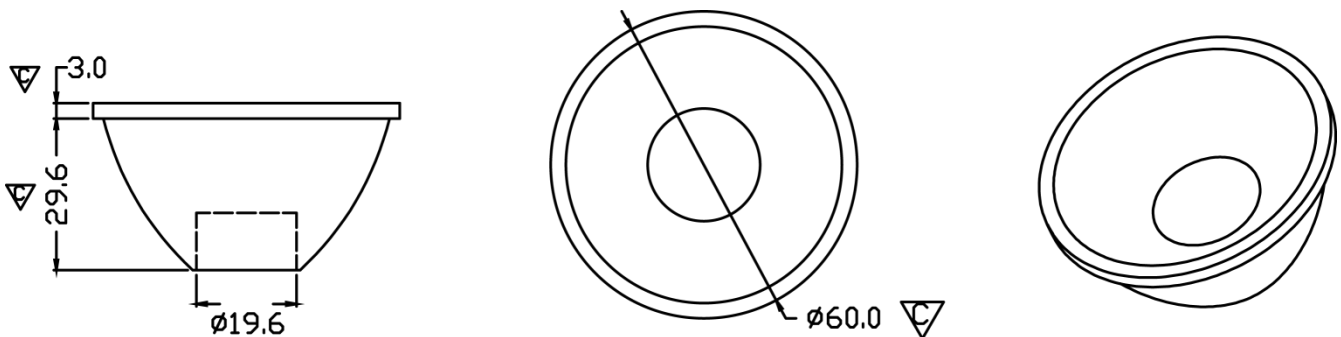


- A. Chun Kuang Optics Corp. Product
- B. Product Type: product abbreviation  
Ex:  
CH→CoB High Intensity  
CC→CoB Compact  
CS→Soft Shading for CoB LED  
HC→Holder for CoB LED

- C. Identity Code
- D. Lens / Fixture Size  
Ex: 075026=Φ75mm / Thickness=26mm (round up)
- C. Serial Numbers

The lens datasheet is applicable for **TRIDONIC LED**, that manufactured by Chun Kuang Optics Corp.

### ✓ Dimensions (mm) : Φ 60 x 32.6



▽:Critical Dimension

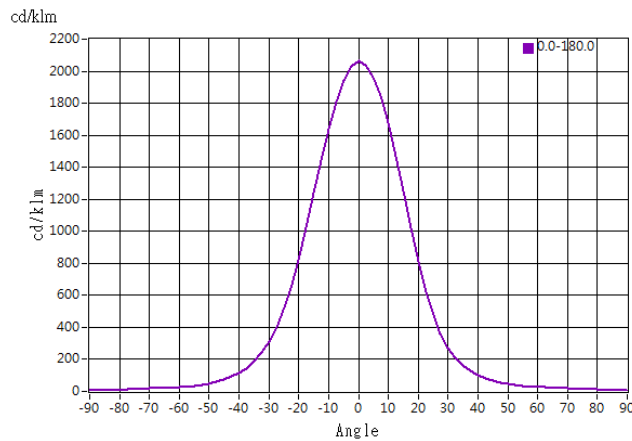




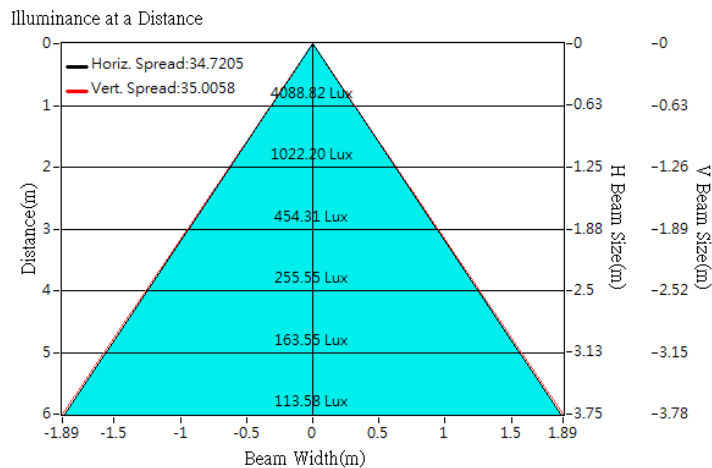
## Optical Characteristics

Model Number	CKO-CH17-060033-0205		
LED	SLE G7 13mm 3000lm 930 R ADV		
LES / LED Size	Φ 13 mm		
FWHM (D50)	35°		
Field Angle (D10)	67°		
H (distance)	3.65mm		
Dimension	Φ =60 mm, Thickness=32.6 mm		
Luminous Flux	1980 lm	Measured @ 17.1 W	
Material	PC / UL94V2		

## cd/klm



## Illuminance At Distances

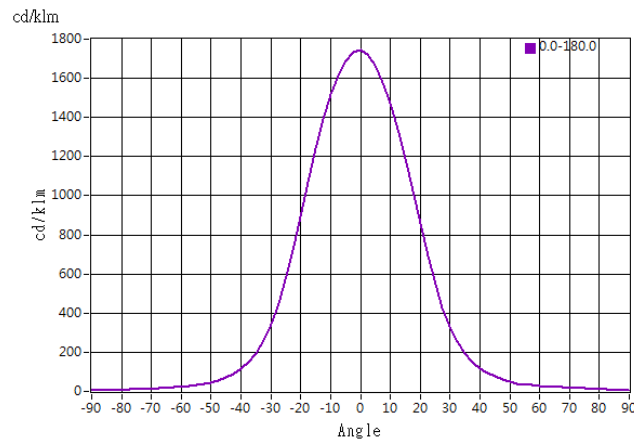




## Optical Characteristics

Model Number	CKO-CH17-060033-0205		
LED	SLE G7 15mm 4000lm 840 R ADV		
LES / LED Size	Φ 15 mm		
FWHM (D50)	40°		
Field Angle (D10)	72°		
H (distance)	3.65mm		
Dimension	Φ =60 mm, Thickness=32.6 mm		
Luminous Flux	4181 lm	Measured @ 32.9W	
Material	PC / UL94V2		

## cd/klm



## Illuminance At Distances

