



Product Model Number

CKO-CS18-025014-0901

✓ Model Number Definitions

CKO-XXXX-XXXXXX-XXXX

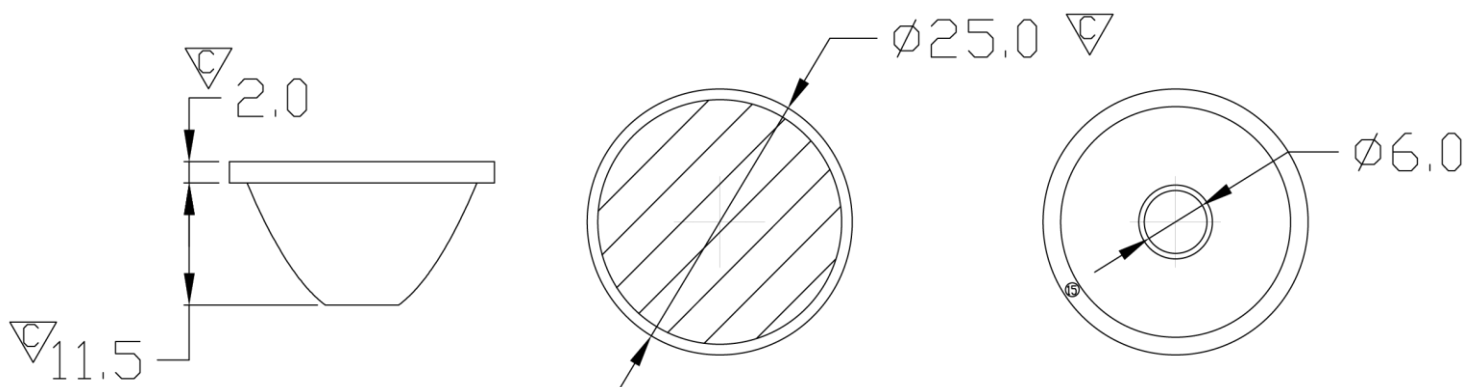


- A. Chun Kuang Optics Corp. Product
- B. Product Type: product abbreviation
Ex:
MX→Multi 33 in 1
SW→Single Wall Washer
CS→Soft Shading for CoB LED
HC→Holder for CoB LED

- C. Identity Code
- D. Lens / Fixture Size
Ex: 025014=Φ25mm / Thickness=13.5mm (round up)
- E. Serial Numbers

The lens datasheet is applicable for **Luminus LED**, that manufactured by Chun Kuang Optics Corp.

✓ Dimensions (mm) : Φ25x13.5



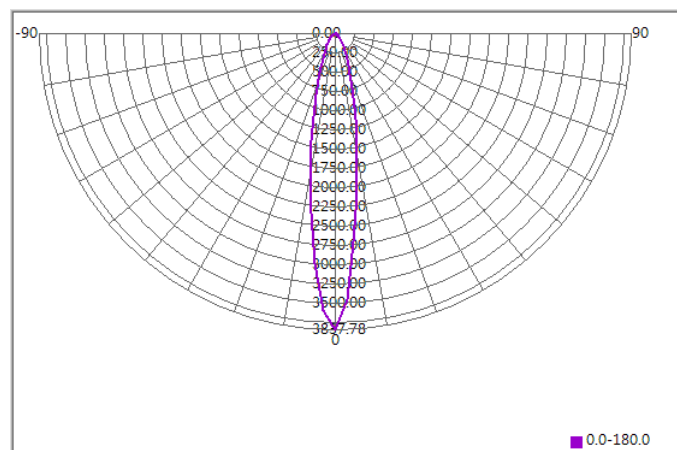
▽:Critical Dimension



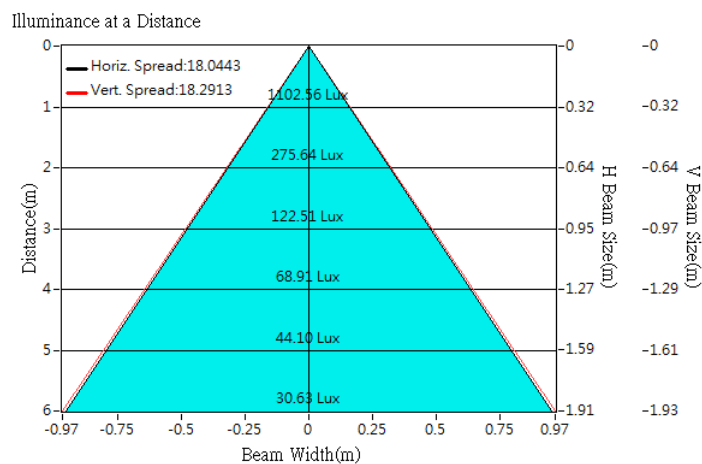
Optical Characteristics

| | | | |
|-------------------|-----------------------------|------------------|--|
| Model Number | CKO-CS18-025014-0901 | | <p>"H" definition</p> <p>LES CoB</p> |
| LED | CXM-3-AC40 | | |
| LES / LED Size | Φ 3.5 mm | | |
| FWHM (D50) | 18° | | |
| Field Angle (D10) | 49° | | |
| H (distance) | 2mm | | |
| Dimension | Φ =25 mm, Thickness=13.5 mm | | |
| Luminous Flux | 287 lm | Measured @ 2.7 W | |
| Material | PC / UL94V2 | | |

cd/klm



Illuminance At Distances

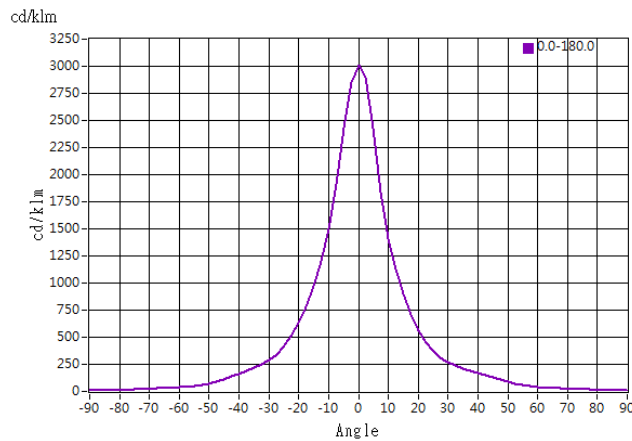




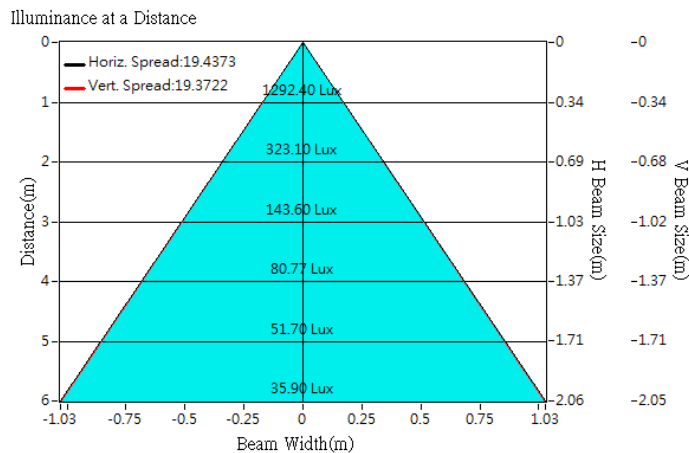
Optical Characteristics

| | | | |
|-------------------|-----------------------------|------------------|-----------------------|
| Model Number | CKO-CS18-025014-0901 | | <p>"H" definition</p> |
| LED | CXM-4-AC40 | | |
| LES / LED Size | Φ 4.5 mm | | |
| FWHM (D50) | 19° | | |
| Field Angle (D10) | 57° | | |
| H (distance) | 2mm | | |
| Dimension | Φ =25 mm, Thickness=13.5 mm | | |
| Luminous Flux | 429 lm | Measured @ 4.0 W | |
| Material | PC / UL94V2 | | |

cd/klm



Illuminance At Distances

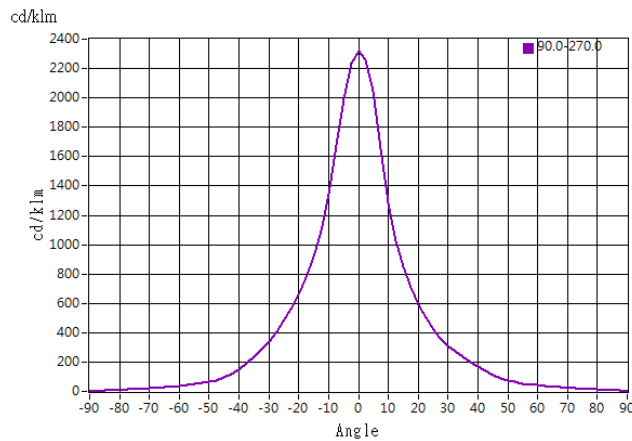




Optical Characteristics

| | | | |
|-------------------|-----------------------------|------------------|--|
| Model Number | CKO-CS18-025014-0901 | | <p>"H" definition</p> <p>LES CoB</p> |
| LED | CXM-6-AC40 | | |
| LES / LED Size | Φ 6.3 mm | | |
| FWHM (D50) | 23° | | |
| Field Angle (D10) | 76° | | |
| H (distance) | 2mm | | |
| Dimension | Φ =25 mm, Thickness=13.5 mm | | |
| Luminous Flux | 602 lm | Measured @ 5.1 W | |
| Material | PC / UL94V2 | | |

cd/klm



Illuminance At Distances

