



Product Model Number

CKO-CU15-034009-9907

✓ Model Number Definitions

CKO-XXXX-XXXXXX-XXXX

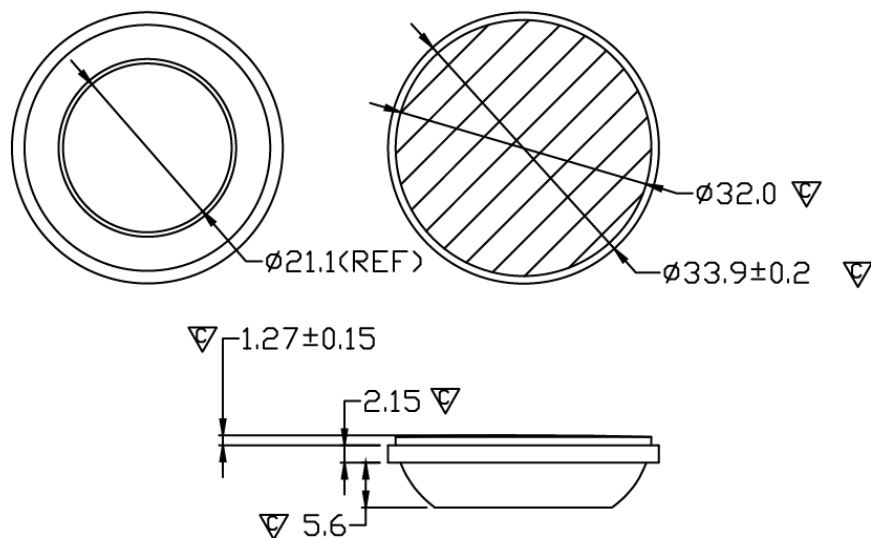


- A. Chun Kuang Optics Corp. Product
- B. Product Type: product abbreviation
Ex:
CH→CoB High Intensity
CC→CoB Compact
CS→Soft Shading for CoB LED
HC→Holder for CoB LED

- C. Identity Code
- D. Lens / Fixture Size
Ex: 075026=Φ75mm / Thickness=26mm (round up)
- C. Serial Numbers

The lens datasheet is applicable for **Luminus LED**, that manufactured by Chun Kuang Optics Corp.

✓ Dimensions (mm) : Φ33.9 x 8.2



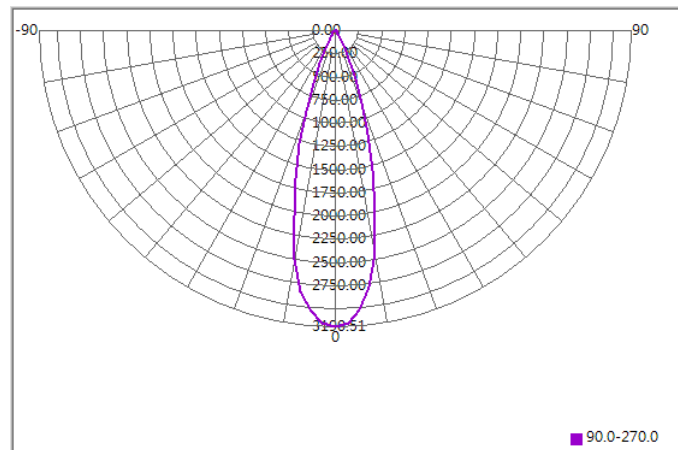
▽:Critical Dimension



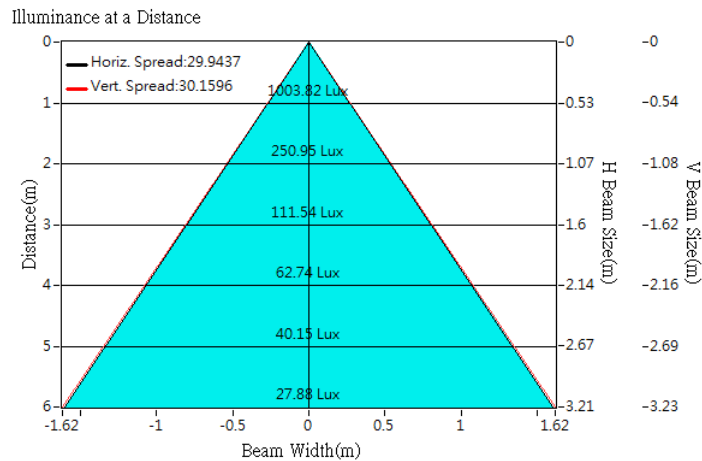
Optical Characteristics

Model Number	CKO-CU15-034009-9907		<p>"H" definition</p>
LED	CXM-3-AC40		
LES / LED Size	Φ 3.5 mm		
FWHM (D50)	30°		
Field Angle (D10)	52°		
H (distance)	2.4 mm		
Dimension	Φ =33.9 mm, Thickness= 8.2 mm		
Luminous Flux	314 lm	Measured @ 2.8 W	
Material	PC / UL94V2		

cd/klm



Illuminance At Distances

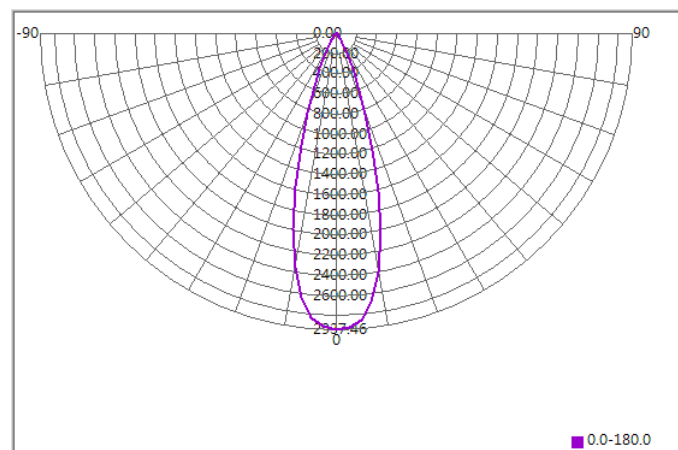




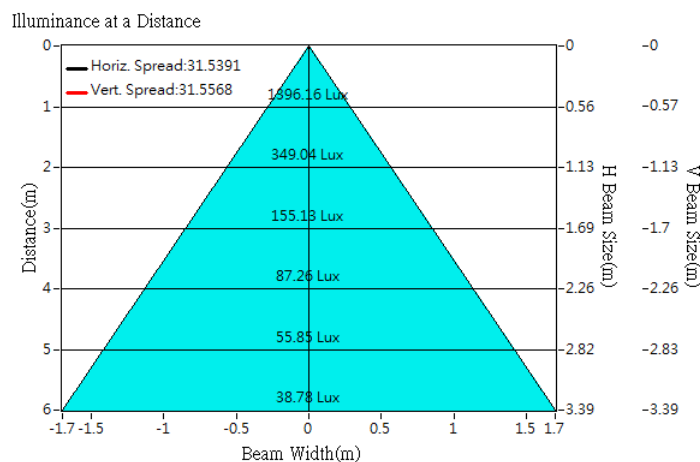
Optical Characteristics

Model Number	CKO-CU15-034009-9907		<p>"H" definition</p> <p>LES CoB</p>
LED	CXM-4-AC40		
LES / LED Size	Φ 4.5 mm		
FWHM (D50)	32°		
Field Angle (D10)	54°		
H (distance)	2.5 mm		
Dimension	Φ =45 mm, Thickness=26 mm		
Luminous Flux	475 lm	Measured @ 4 W	
Material	PC / UL94V2		

cd/klm



Illuminance At Distances

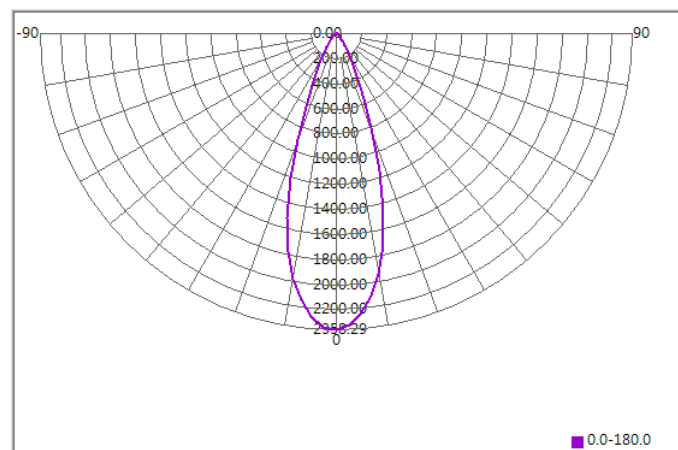




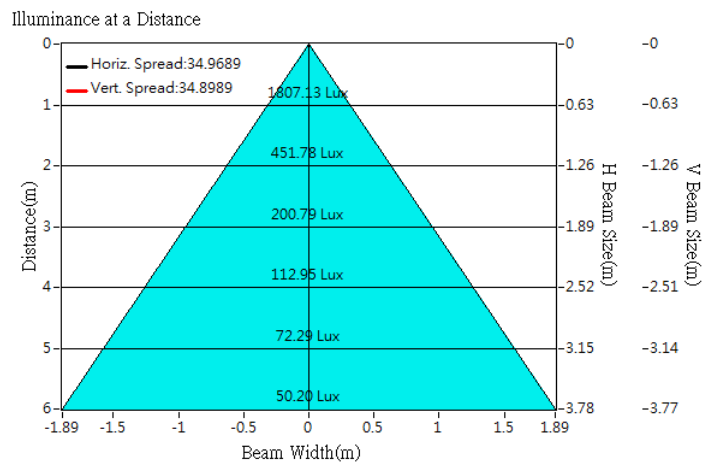
Optical Characteristics

Model Number	CKO-CU15-034009-9907		<p>"H" definition</p>
LED	CXM-6-AC40		
LES / LED Size	Φ 6.3 mm		
FWHM (D50)	35°		
Field Angle (D10)	60°		
H (distance)	2.5 mm		
Dimension	Φ =45 mm, Thickness=26 mm		
Luminous Flux	766 lm	Measured @ 5 W	
Material	PC / UL94V2		

cd/klm



Illuminance At Distances

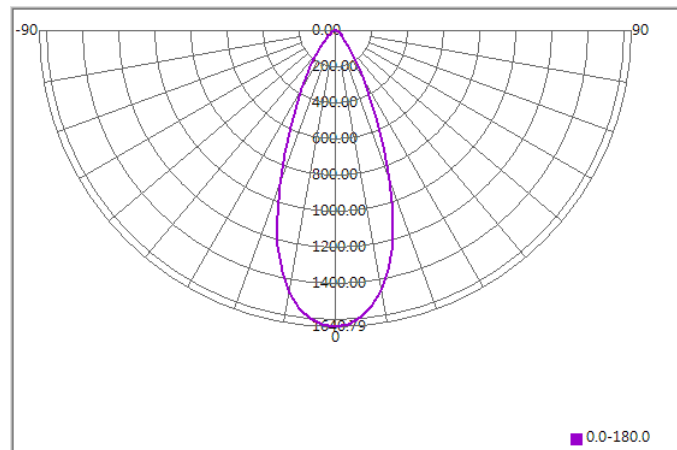




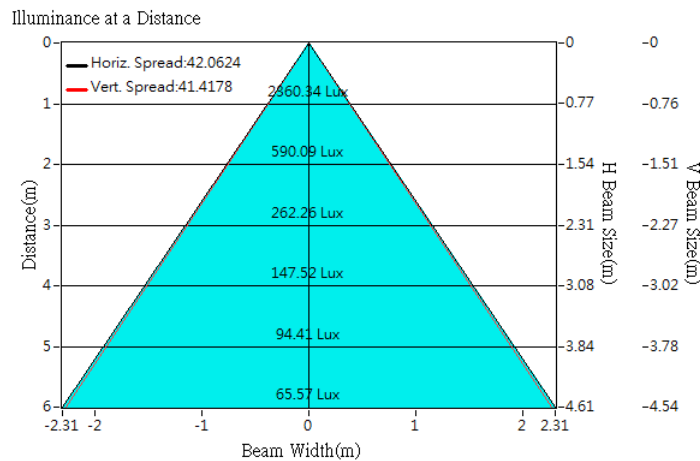
Optical Characteristics

Model Number	CKO-CU15-034009-9907	<p>"H" definition</p> <p>LES CoB</p>
LED	CXM-9-AC30	
LES / LED Size	Φ 9.6 mm	
FWHM (D50)	42°	
Field Angle (D10)	76°	
H (distance)	2.5 mm	
Dimension	Φ =45 mm, Thickness=26 mm	
Luminous Flux	1438 lm	
Material	PC / UL94V2	

cd/klm



Illuminance At Distances

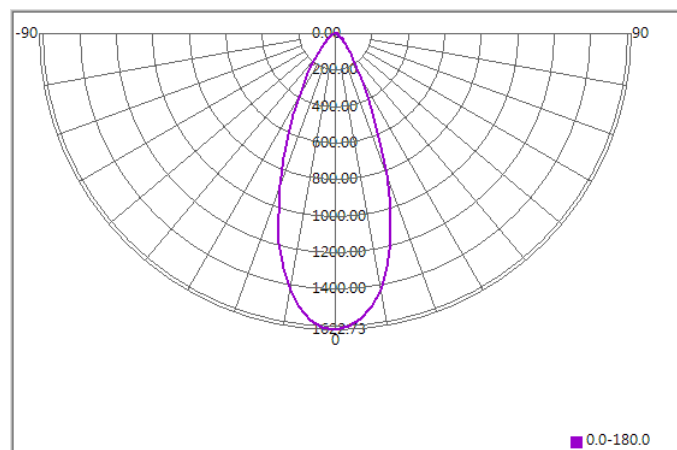




Optical Characteristics

Model Number	CKO-CU15-034009-9907	<p>"H" definition</p>
LED	CXM-9-AC40	
LES / LED Size	Φ 9.8 mm	
FWHM (D50)	41°	
Field Angle (D10)	77°	
H (distance)	2.4 mm	
Dimension	Φ =33.9 mm, Thickness= 8.2 mm	
Luminous Flux	1560 lm	
Material	PC / UL94V2	

cd/klm



Illuminance At Distances

