

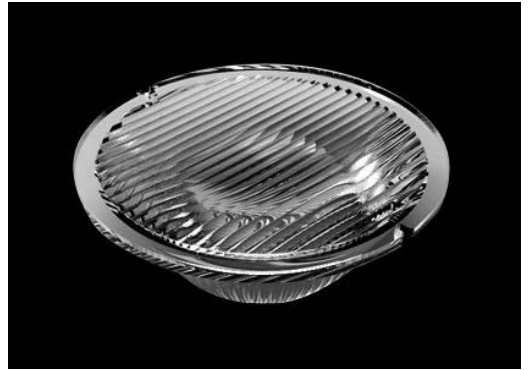


Product Model Number

CKO-SA20-075026-0407

✓ Model Number Definitions

CKO-XXXX-XXXXXX-XXXX

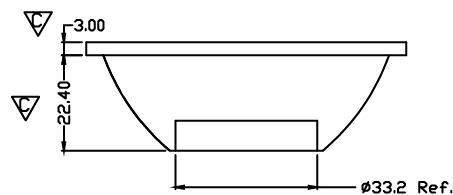
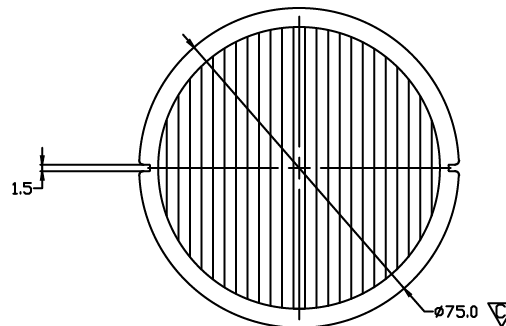
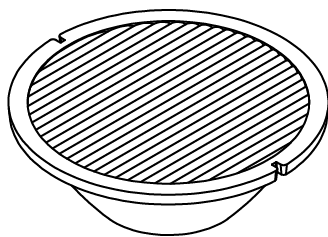


- A. Chun Kuang Optics Corp. Product
- B. Product Type: product abbreviation
Ex:
CH→CoB High Intensity
CC→CoB Compact
CS→Soft Shading for CoB LED
HC→Holder for CoB LED

- C. Identity Code
- D. Lens / Fixture Size
Ex: 075026=Φ75mm / Thickness=26mm (round up)
- E. Serial Numbers

The lens datasheet is applicable for **Citizen LED**, that manufactured by Chun Kuang Optics Corp.

✓ Dimensions (mm) : Φ75 x 25.4



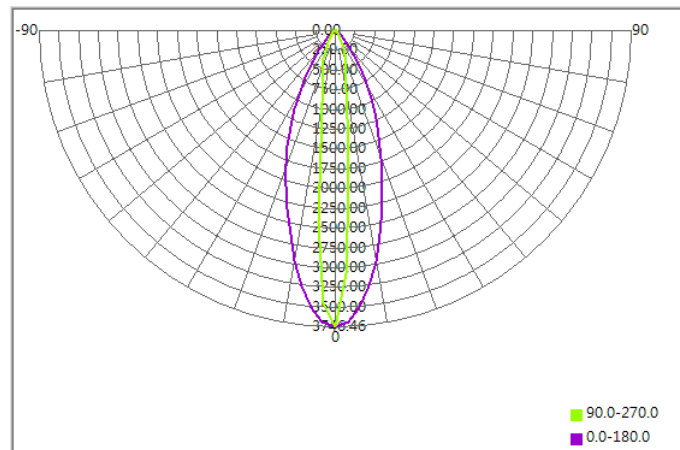
▽:Critical Dimension



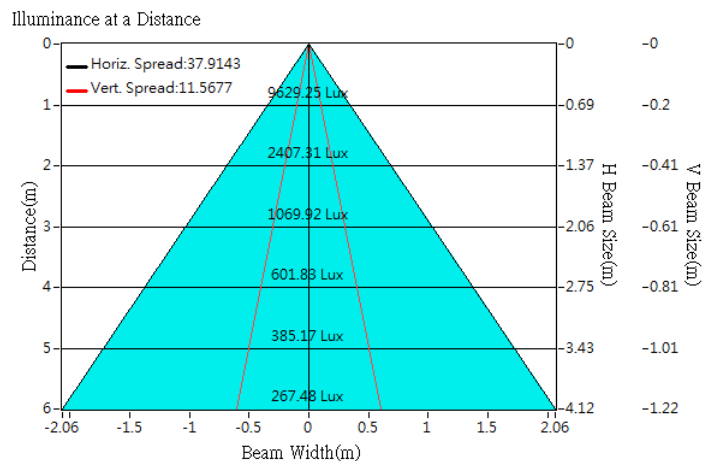
Optical Characteristics

Model Number	CKO-SA20-075026-0407		<p>"H" definition</p>
LED	CLU 711		
LES / LED Size	Φ 8.5 mm		
FWHM (D50)	11°x38°		
Field Angle (D10)	44°x76°		
H (distance)	3.65mm		
Dimension	Φ =75 mm, Thickness=33 mm		
Luminous Flux	2570 lm	Measured @ 26.7 W	
Material	PC / UL94V2		

cd/klm



Illuminance At Distances

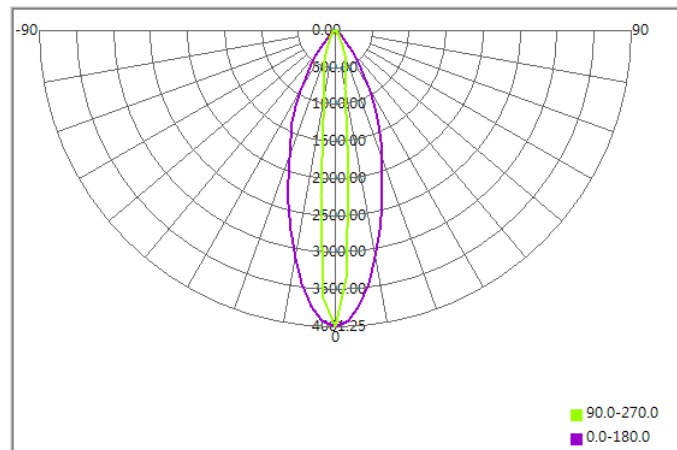




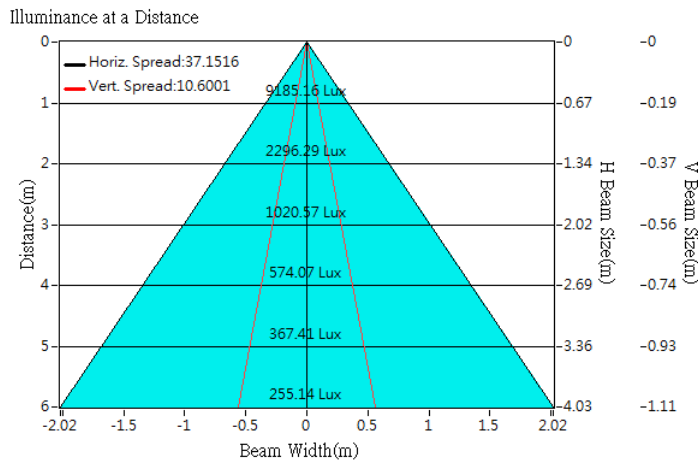
Optical Characteristics

Model Number	CKO-SA20-075026-0407		<p>"H" definition</p>
LED	CLU 710		
LES / LED Size	Φ 8.5 mm		
FWHM (D50)	10°x37°		
Field Angle (D10)	42°x76°		
H (distance)	3.65mm		
Dimension	Φ =75 mm, Thickness=33 mm		
Luminous Flux	2295 lm	Measured @ 26.3 W	
Material	PC / UL94V2		

cd/klm



Illuminance At Distances

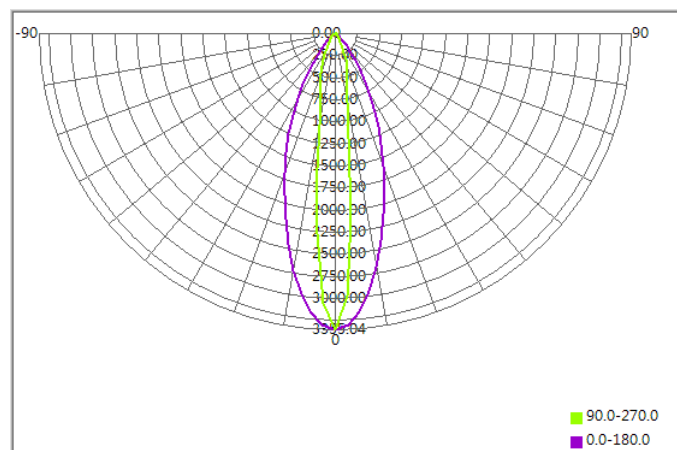




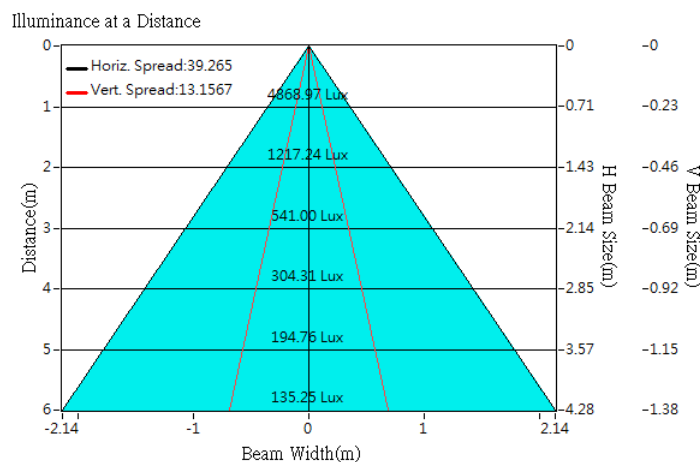
Optical Characteristics

Model Number	CKO-CC20-075026-0401		<p>"H" definition</p>
LED	CLU 028		
LES / LED Size	Φ 9.8 mm		
FWHM (D50)	13°x39°		
Field Angle (D10)	46°x77°		
H (distance)	3.65mm		
Dimension	Φ =75 mm, Thickness=33 mm		
Luminous Flux	1451 lm	Measured @ 12.6 W	
Material	PC / UL94V2		

cd/klm



Illuminance At Distances

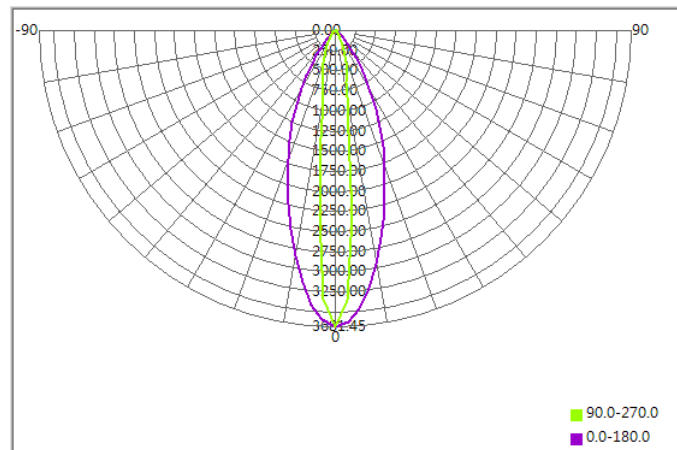




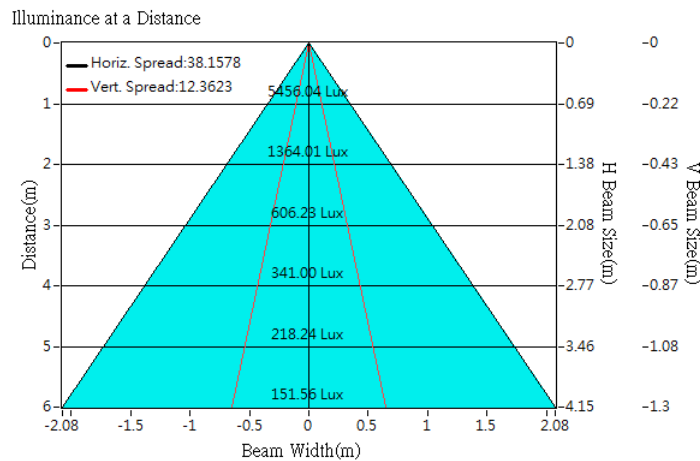
Optical Characteristics

Model Number	CKO-CC20-075026-0401		<p>"H" definition</p>
LED	CLU 026		
LES / LED Size	Φ 9.8 mm		
FWHM (D50)	12°x38°		
Field Angle (D10)	43°x76°		
H (distance)	3.65mm		
Dimension	Φ =75 mm, Thickness=33 mm		
Luminous Flux	1482 lm	Measured @ 12.5 W	
Material	PC / UL94V2		

cd/klm



Illuminance At Distances

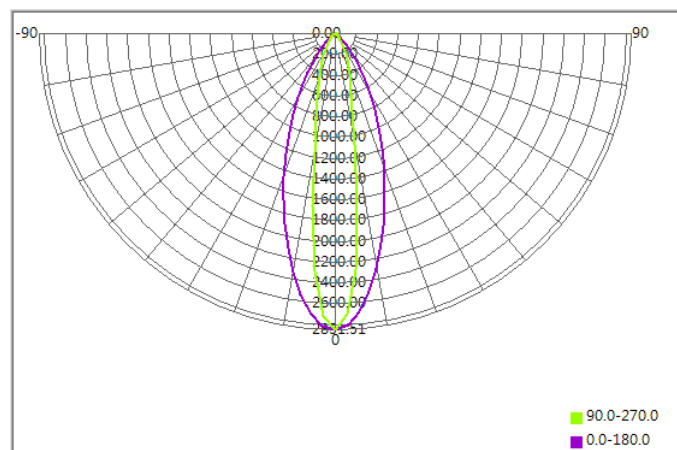




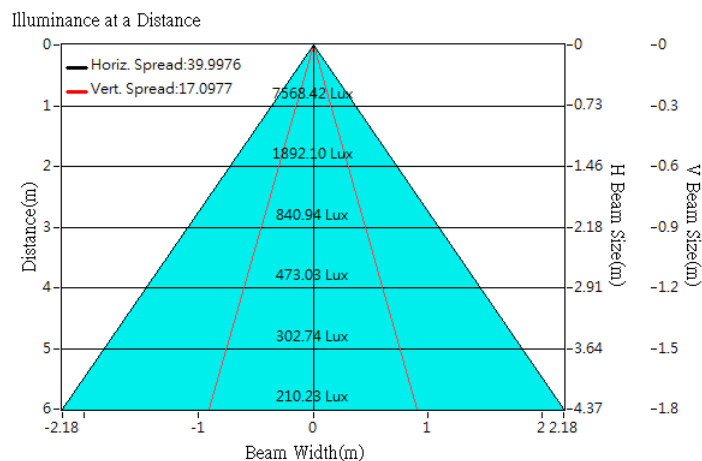
Optical Characteristics

Model Number	CKO-SA20-075026-0407		<p>"H" definition</p>
LED	CLU 038		
LES / LED Size	Φ 14.5 mm		
FWHM (D50)	17°x40°		
Field Angle (D10)	50°x79°		
H (distance)	3.65 mm		
Dimension	Φ =75mm, Thickness=25.4 mm		
Luminous Flux	2654 lm	Measured @ 25.1 W	
Material	PC / UL94V2		

cd/klm



Illuminance At Distances

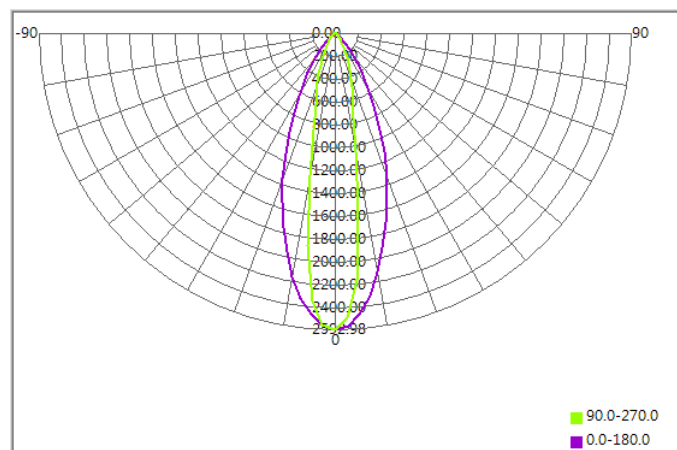




Optical Characteristics

Model Number	CKO-SA20-075026-0407		<p>"H" definition</p>
LED	CLU 036		
LES / LED Size	Φ 14.5 mm		
FWHM (D50)	18°x41°		
Field Angle (D10)	53°x79°		
H (distance)	3.65 mm		
Dimension	Φ =75mm, Thickness=25.4 mm		
Luminous Flux	1868 lm	Measured @ 15.7 W	
Material	PC / UL94V2		

cd/klm



Illuminance At Distances

