



Product Model Number

CKO-SA20-075026-0409

✓ Model Number Definitions

CKO-XXXX-XXXXXX-XXXX

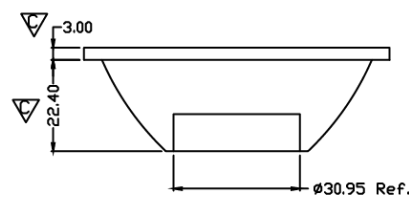
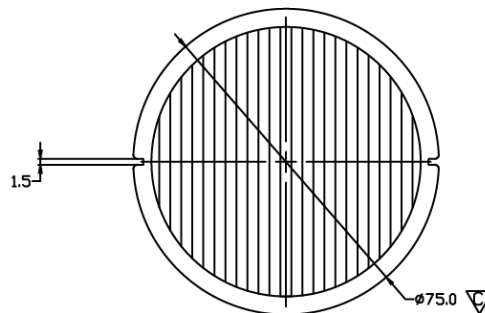
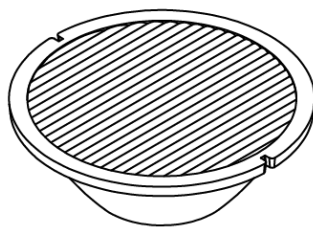


- A. Chun Kuang Optics Corp. Product
- B. Product Type: product abbreviation
Ex:
CH→CoB High Intensity
CC→CoB Compact
CS→Soft Shading for CoB LED
HC→Holder for CoB LED

- C. Identity Code
- D. Lens / Fixture Size
Ex: 075026=Φ75mm / Thickness=26mm (round up)
- C. Serial Numbers

The lens datasheet is applicable for **Citizen LED**, that manufactured by Chun Kuang Optics Corp.

✓ Dimensions (mm) : Φ75 x 25.4



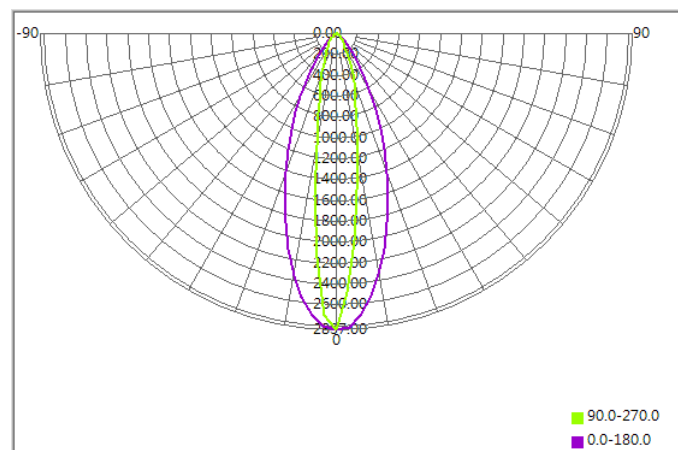
▽:Critical Dimension



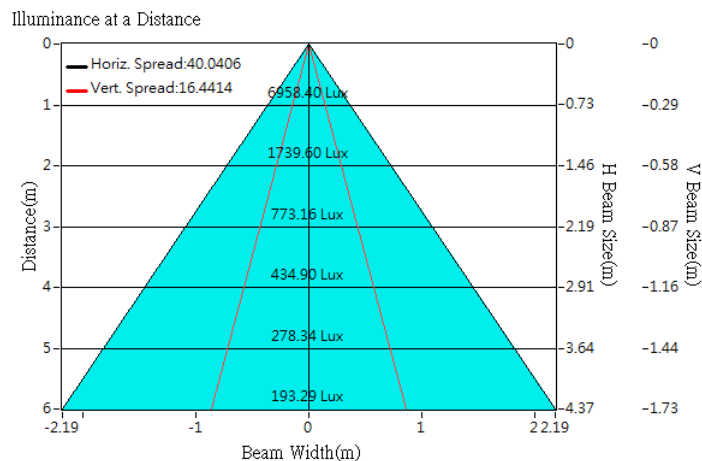
Optical Characteristics

Model Number	CKO-SA20-075026-0409		<p>"H" definition</p>
LED	CLU 711		
LES / LED Size	Φ 8.5 mm		
FWHM (D50)	16°x40°		
Field Angle (D10)	50°x78°		
H (distance)	3.65mm		
Dimension	Φ =75 mm, Thickness=33 mm		
Luminous Flux	2452 lm	Measured @ 26.5 W	
Material	PC / UL94V2		

cd/klm



Illuminance At Distances

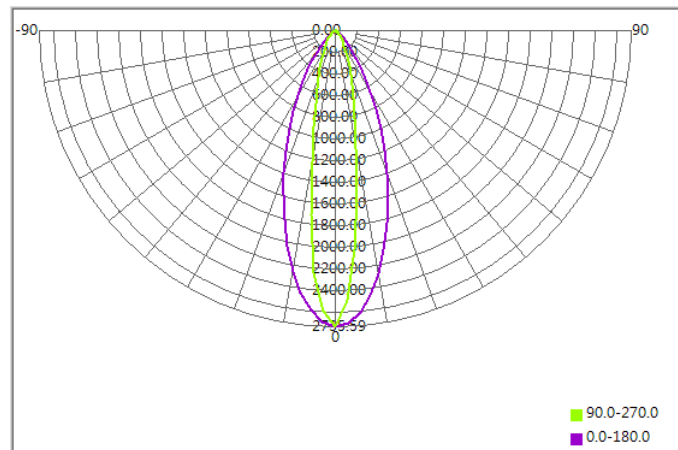




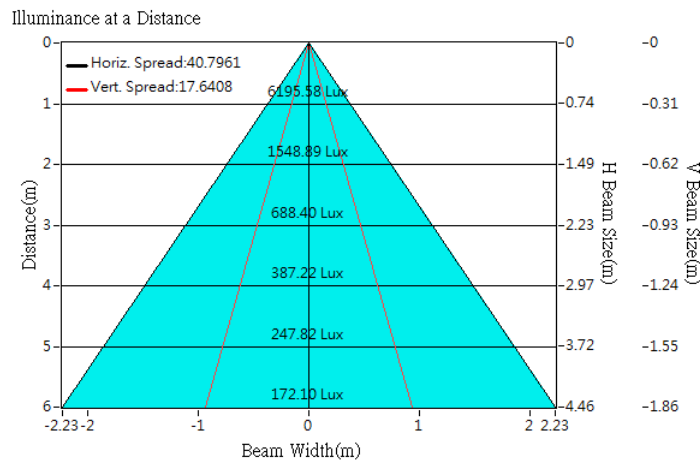
Optical Characteristics

Model Number	CKO-SA20-075026-0409		<p>"H" definition</p>
LED	CLU 710		
LES / LED Size	Φ 8.5 mm		
FWHM (D50)	17°x41°		
Field Angle (D10)	50°x79°		
H (distance)	3.65mm		
Dimension	Φ =75 mm, Thickness=33 mm		
Luminous Flux	2264 lm	Measured @ 26.3 W	
Material	PC / UL94V2		

cd/klm



Illuminance At Distances

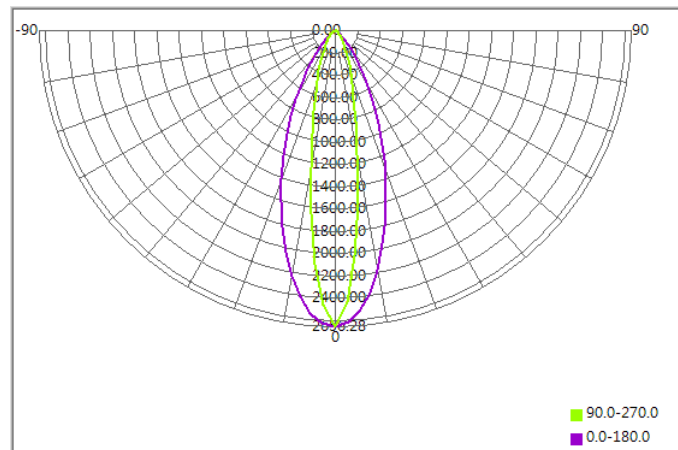




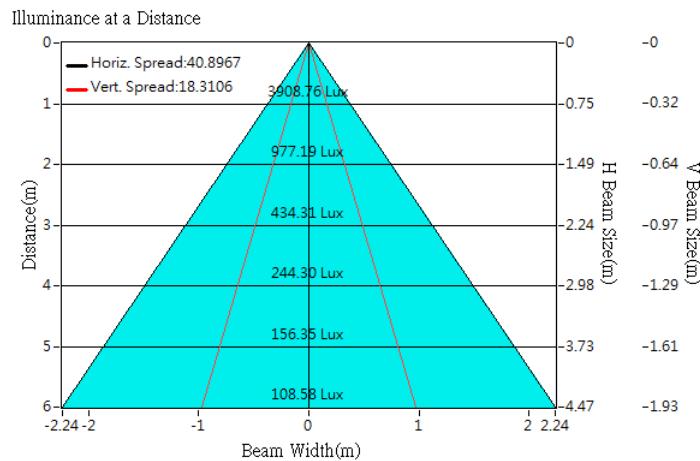
Optical Characteristics

Model Number	CKO-SA20-075026-0409		<p>"H" definition</p>
LED	CLU 028		
LES / LED Size	Φ 9.8 mm		
FWHM (D50)	18°x41°		
Field Angle (D10)	51°x79°		
H (distance)	3.65mm		
Dimension	Φ =75 mm, Thickness=33 mm		
Luminous Flux	1471 lm	Measured @ 12.6 W	
Material	PC / UL94V2		

cd/klm



Illuminance At Distances

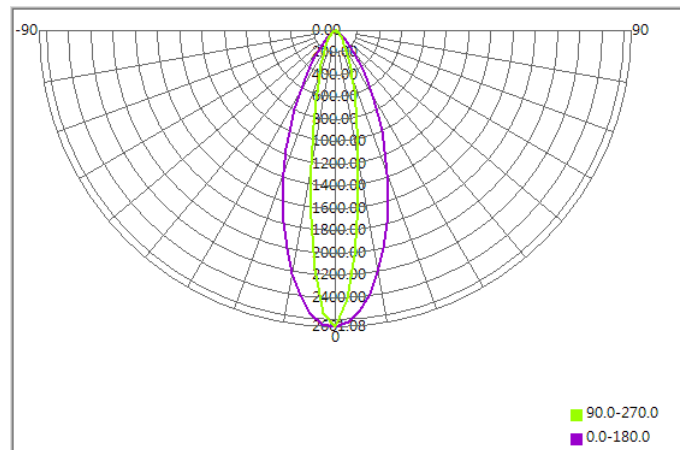




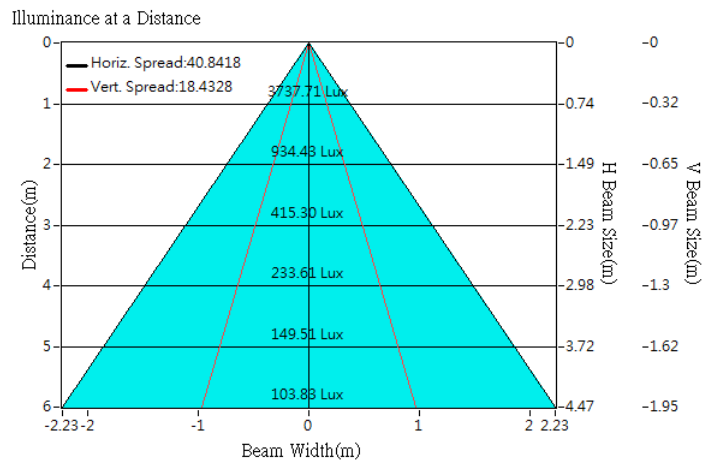
Optical Characteristics

Model Number	CKO-SA20-075026-0409		<p>"H" definition</p>
LED	CLU 026		
LES / LED Size	Φ 9.8 mm		
FWHM (D50)	18°x41°		
Field Angle (D10)	50°x79°		
H (distance)	3.65mm		
Dimension	Φ =75 mm, Thickness=33 mm		
Luminous Flux	1404 lm	Measured @ 12.8 W	
Material	PC / UL94V2		

cd/klm



Illuminance At Distances

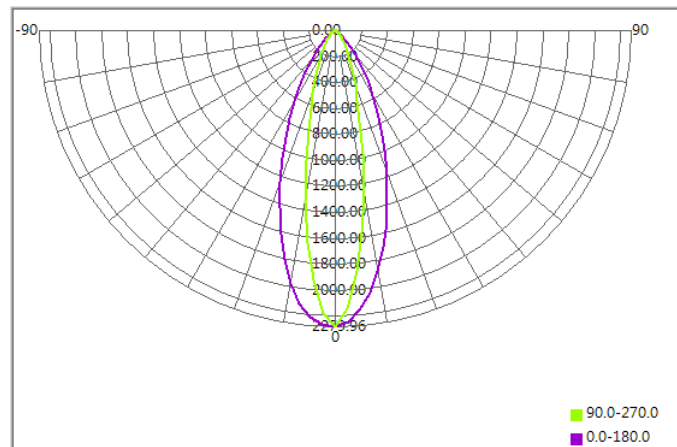




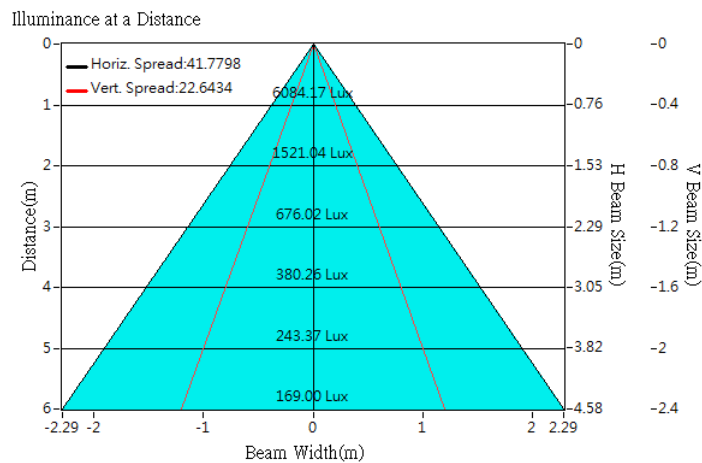
Optical Characteristics

Model Number	CKO-SA20-075026-0409		<p>"H" definition</p>
LED	CLU 038		
LES / LED Size	Φ 14.5 mm		
FWHM (D50)	23°x42°		
Field Angle (D10)	57°x82°		
H (distance)	3.65 mm		
Dimension	Φ =75mm, Thickness=25.4 mm		
Luminous Flux	2668 lm	Measured @ 25.1 W	
Material	PC / UL94V2		

cd/klm



Illuminance At Distances

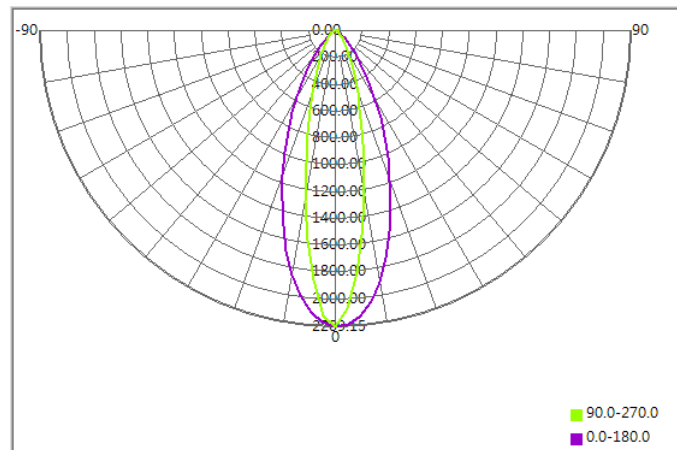




Optical Characteristics

Model Number	CKO-SA20-075026-0409		<p>"H" definition</p>
LED	CLU 036		
LES / LED Size	Φ 14.5 mm		
FWHM (D50)	23°x42°		
Field Angle (D10)	59°x82°		
H (distance)	3.65 mm		
Dimension	Φ =75mm, Thickness=25.4 mm		
Luminous Flux	1762 lm	Measured @ 16.4 W	
Material	PC / UL94V2		

cd/klm



Illuminance At Distances

