



## Product Model Number

**CKO-SP16-033016-3701**

### ✓ Model Number Definitions

**CKO-XXXX-XXXXXX-XXXX**

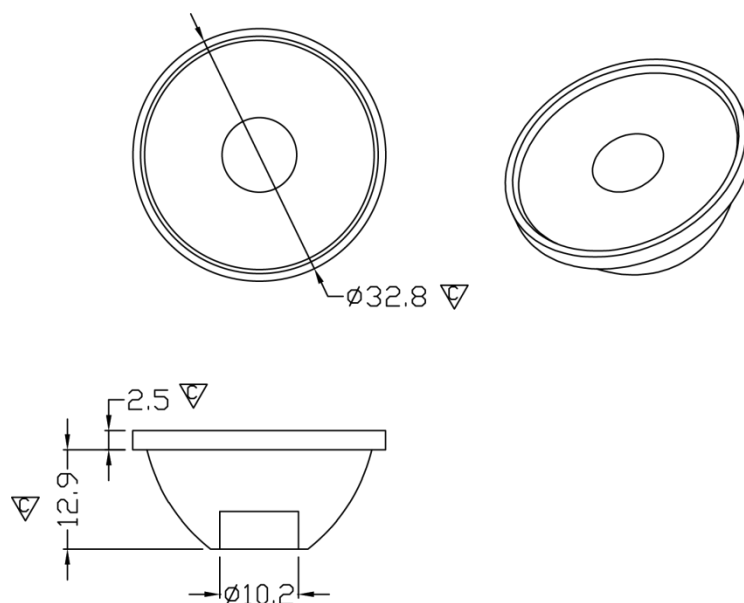


- A. Chun Kuang Optics Corp. Product
- B. Product Type: product abbreviation  
Ex:  
CH→CoB High Intensity  
CC→CoB Compact  
CS→Soft Shading for CoB LED  
HC→Holder for CoB LED

- C. Identity Code
- D. Lens / Fixture Size  
Ex: 075026=Φ75mm / Thickness=26mm (round up)
- C. Serial Numbers

The lens datasheet is applicable for **Osram LED**, that manufactured by Chun Kuang Optics Corp.

### ✓ Dimensions (mm) : Φ32.8 x 15.4



▽:Critical Dimension

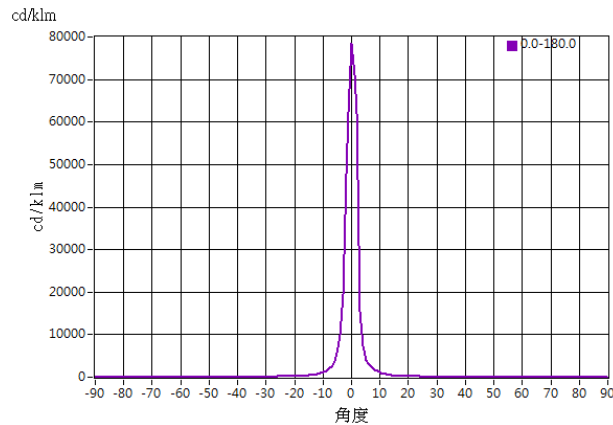




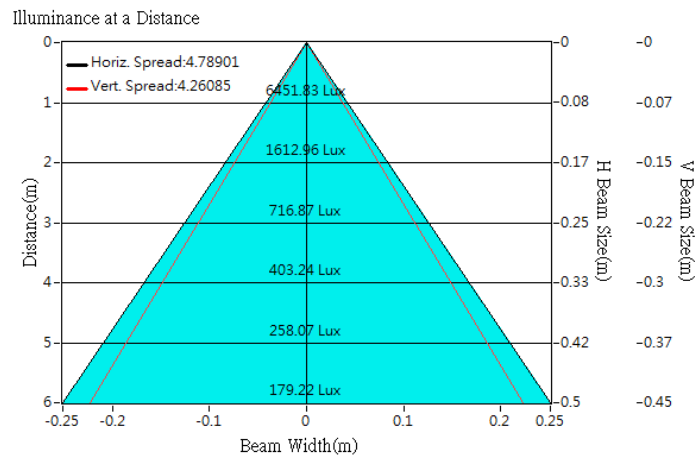
## Optical Characteristics

Model Number	CKO-SP16-033016-3701		
LED	<b>Oslon SSL 80</b>		
LES / LED Size	3.0 x 3.0		
FWHM (D50)	4.8°		
Field Angle (D10)	8°		
Dimension with Holder	Φ =32.8 mm, Thickness=15.4 mm		
Luminous Flux	82 lm	Measured @ 1.1 W	
Material	PC / UL94V2		

## cd/klm



## Illuminance At Distances

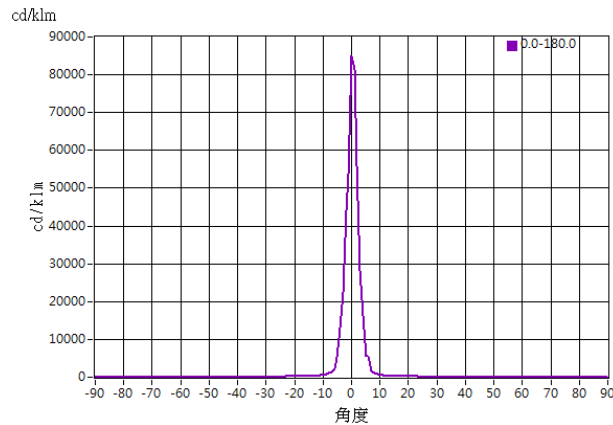




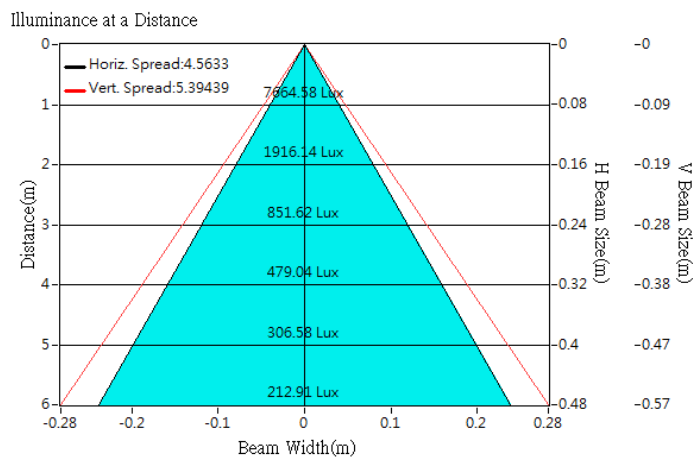
## Optical Characteristics

Model Number	CKO-SP16-033016-3701		<p>Schematic Diagram</p> 
LED	<b>Oslon 150</b>		
LES / LED Size	3.0 x 3.0		
FWHM (D50)	4.6°		
Field Angle (D10)	9°		
Dimension with Holder	Φ =32.8 mm, Thickness=15.4 mm		
Luminous Flux	90 lm	Measured @ 1.1 W	
Material	PC / UL94V2		

## cd/klm



## Illuminance At Distances

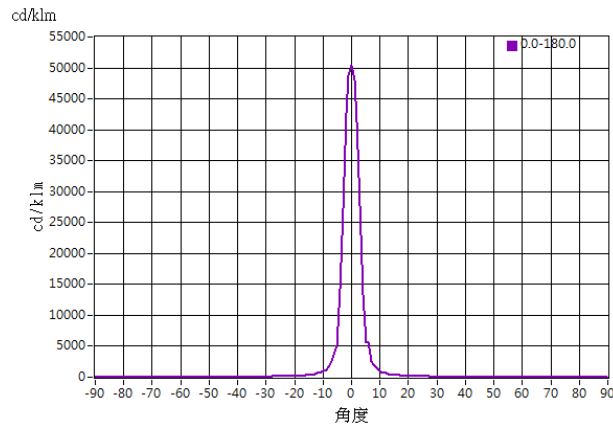




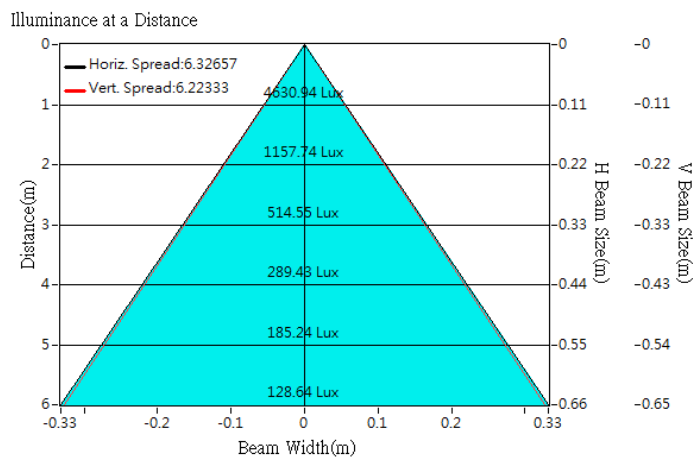
## Optical Characteristics

Model Number	CKO-SP16-033016-3701		<p>Schematic Diagram</p> 
LED	<b>Oslon square</b>		
LES / LED Size	3.0 x 3.0		
FWHM (D50)	6°		
Field Angle (D10)	11°		
Dimension with Holder	Φ =32.8 mm, Thickness=15.4 mm		
Luminous Flux	92 lm	Measured @ 1.0 W	
Material	PC / UL94V2		

## cd/klm



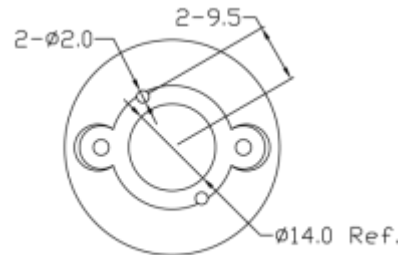
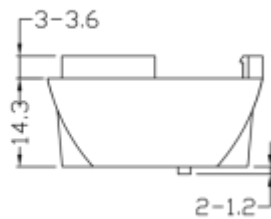
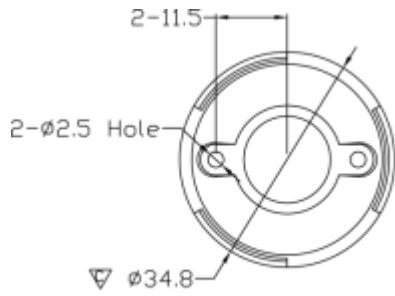
## Illuminance At Distances





### Lens Accessories - Lens Holder

Product Model	Size (mm)	Material
CKO-HL16-035020-3801	34.8 x 19.1	PC-V0



Bottom view

▽:Critical Dimension