



## Product Model Number

**CKO-ZU15-075017-9701**

### ✓ Model Number Definitions

**CKO-XXXX-XXXXXX-XXXX**

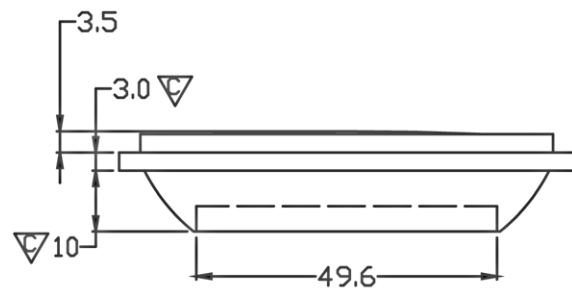
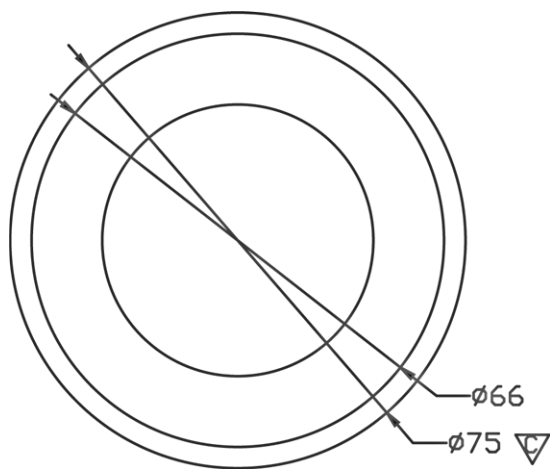


- A. Chun Kuang Optics Corp. Product
- B. Product Type: product abbreviation  
Ex:  
CH→CoB High Intensity  
CC→CoB Compact  
ZU→Multi-Angle Zooming Lens  
HC→Holder for CoB LED

- C. Identity Code
- D. Lens / Fixture Size  
Ex: 075026=Φ75mm / Thickness=26mm (round up)
- C. Serial Numbers

The lens datasheet is applicable for **Lumileds LED**, that manufactured by Chun Kuang Optics Corp.

### ✓ Dimensions (mm) : Φ75 x 16.5



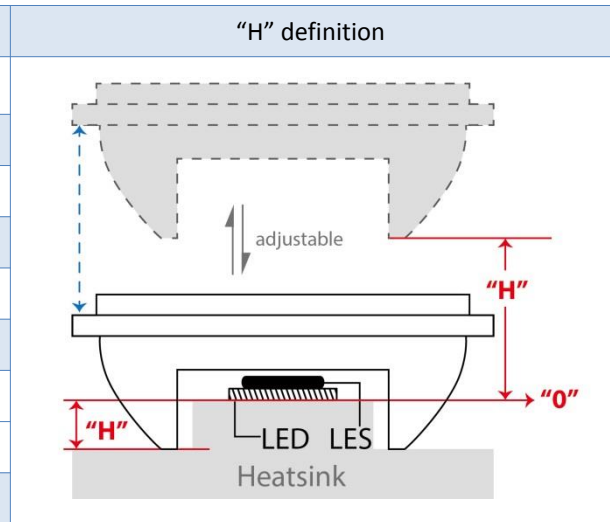
▽:Critical Dimension



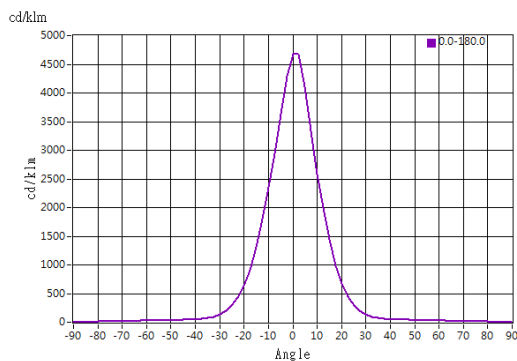


## Optical Characteristics

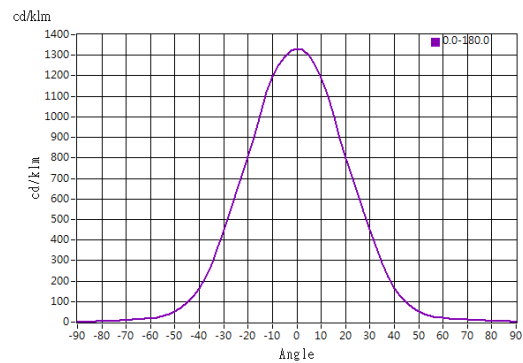
Model Number	CKO-ZU15-075017-9701
LED	<b>Luxeon 1204</b>
LES / LED Size	Φ 13 mm
FWHM (D50)	21°-47°
Field Angle (D10)	44°-84°
H (distance)	5mm~1.3mm
Dimension	Φ =75 mm, Thickness=16.5 mm
Luminous Flux	1529 lm ~ 1585 lm (21°-47°) Measured @ 16.1 W
Material	PC / UL94V2



## cd/klm

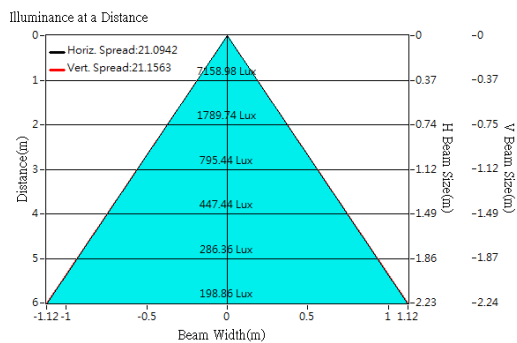


**H: 5.0 mm**

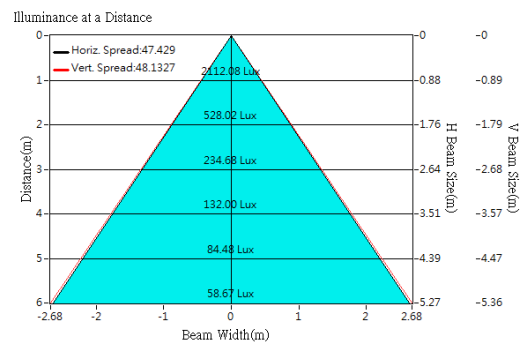


**H: -1.3 mm**

## Illuminance At Distances



**H: 5.0 mm**

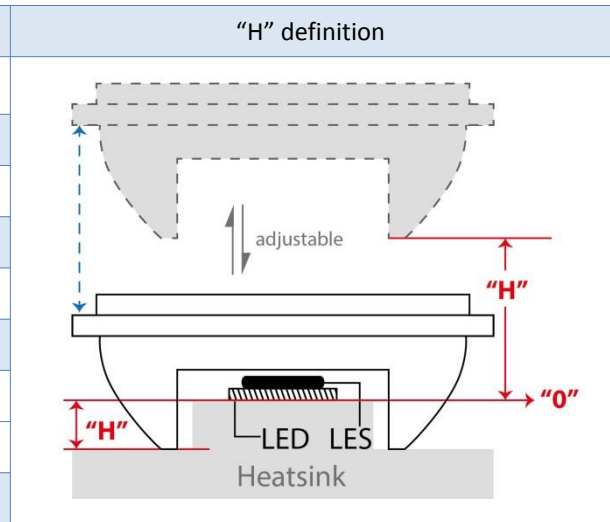


**H: -1.3 mm**

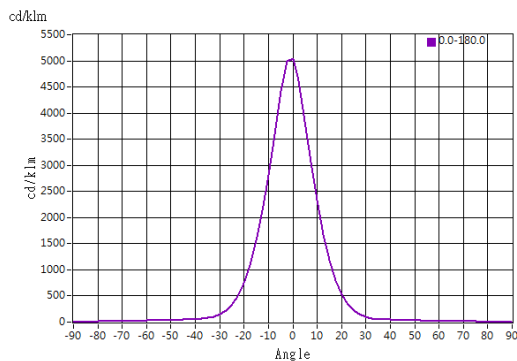


## Optical Characteristics

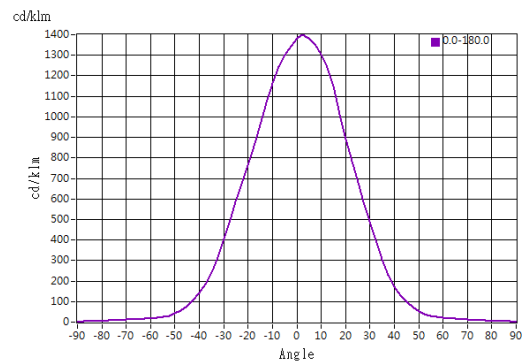
Model Number	CKO-ZU15-075017-9701
LED	<b>Luxeon 1205</b>
LES / LED Size	Φ 13 mm
FWHM (D50)	20°-46°
Field Angle (D10)	43°-82°
H (distance)	5mm~1.3mm
Dimension	Φ =75 mm, Thickness=16.5 mm
Luminous Flux	2135 lm ~ 2197 lm (20°-46°) Measured @ 21.4 W
Material	PC / UL94V2



## cd/klm

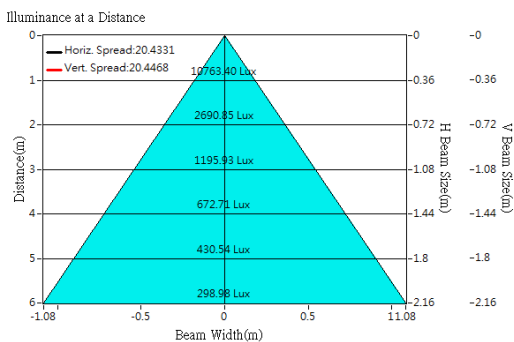


**H: 5.0 mm**

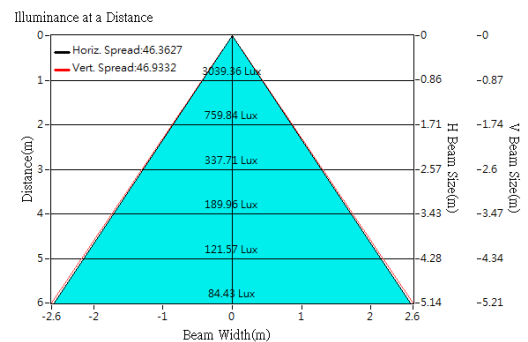


**H: -1.3 mm**

## Illuminance At Distances



**H: 5.0 mm**

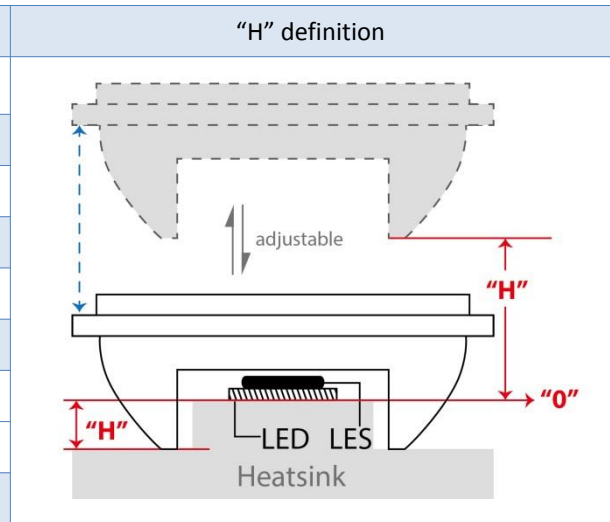


**H: -1.3 mm**

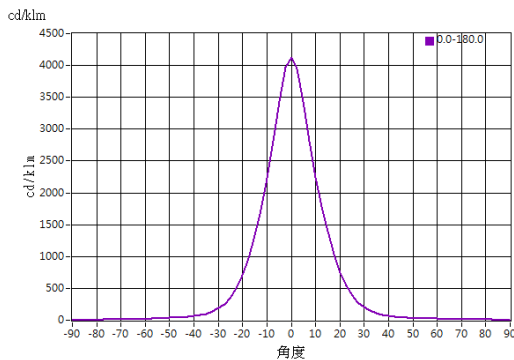


## Optical Characteristics

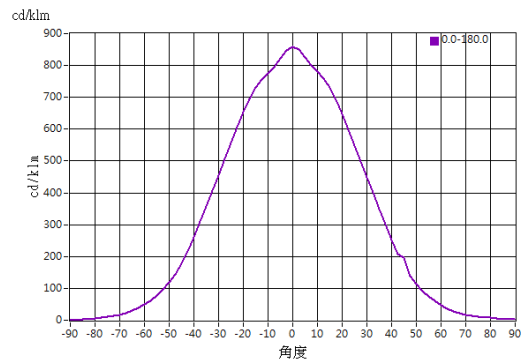
Model Number	CKO-ZU15-075017-9701
LED	<b>Luxeon 1208</b>
LES / LED Size	Φ 15 mm
FWHM (D50)	22°-62°
Field Angle (D10)	48°-107°
H (distance)	4.7mm~2.3mm
Dimension	Φ =75 mm, Thickness=16.5 mm
Luminous Flux	2460 lm ~ 2421 lm (22°-62°) Measured @ 24.9 W
Material	PC / UL94V2



## cd/klm

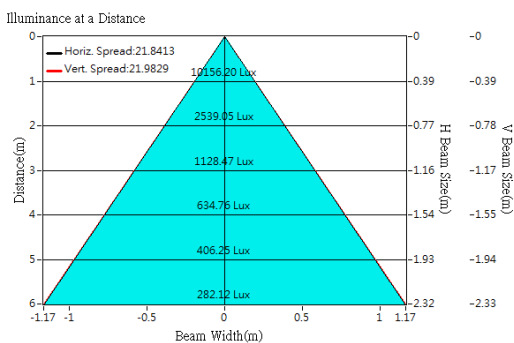


**H: 5.0 mm**

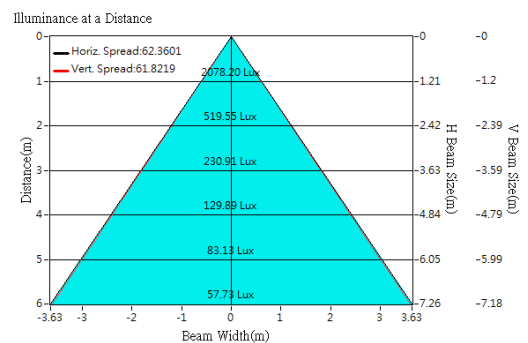


**H: -1.3 mm**

## Illuminance At Distances



**H: 5.0 mm**



**H: -1.3 mm**