



Product Model Number

CKO-ZU15-110025-9301

✓ Model Number Definitions

CKO-XXXX-XXXXXX-XXXX

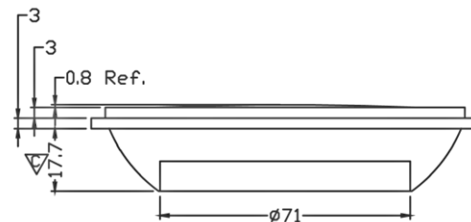
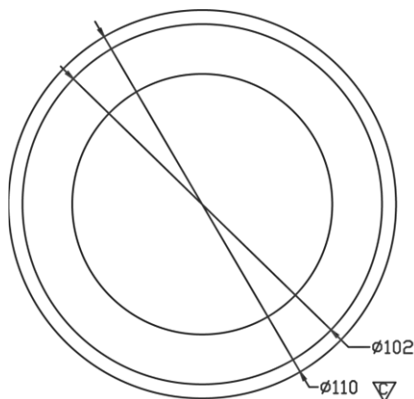


- A. Chun Kuang Optics Corp. Product
- B. Product Type: product abbreviation
Ex:
CH→CoB High Intensity
CC→CoB Compact
ZU→Multi-Angle Zooming Lens
HC→Holder for CoB LED

- C. Identity Code
- D. Lens / Fixture Size
Ex: 075026=Φ75mm / Thickness=26mm (round up)
- C. Serial Numbers

The lens datasheet is applicable for **Citizen LED**, that manufactured by Chun Kuang Optics Corp.

✓ Dimensions (mm) : Φ110 x 24.5

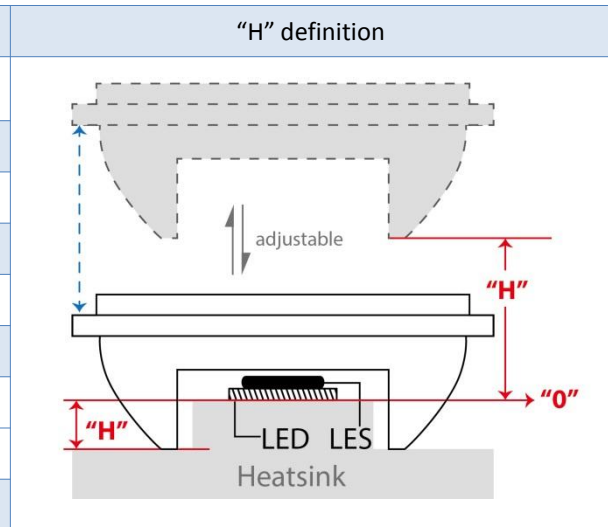


▽:Critical Dimension

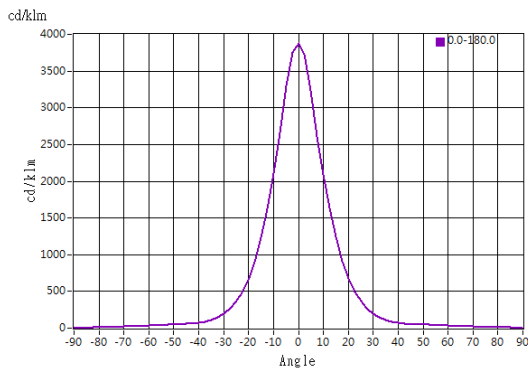


Optical Characteristics

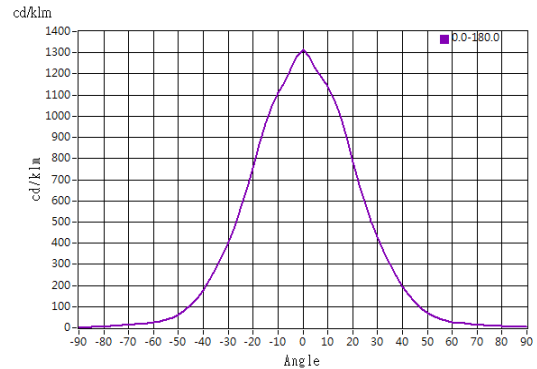
Model Number	CKO-ZU15-110025-9301
LED	CLU 046
LES / LED Size	Φ 22 mm
FWHM (D50)	22°-45°
Field Angle (D10)	49°-87°
H (distance)	6.0mm~5.5mm
Dimension	Φ =110 mm, Thickness=24.5 mm
Luminous Flux	4927 lm ~5210 lm (22° ~45 °) Measured @ 38.4 W
Material	PC / UL94V2



cd/klm

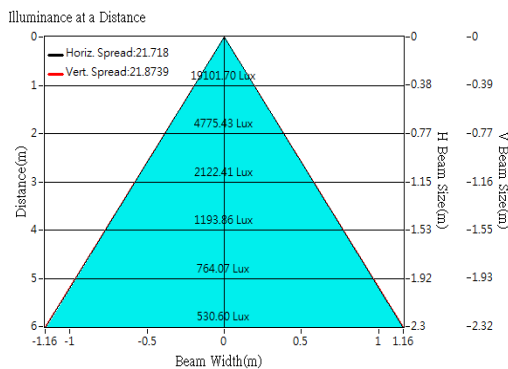


H: 6.0 mm

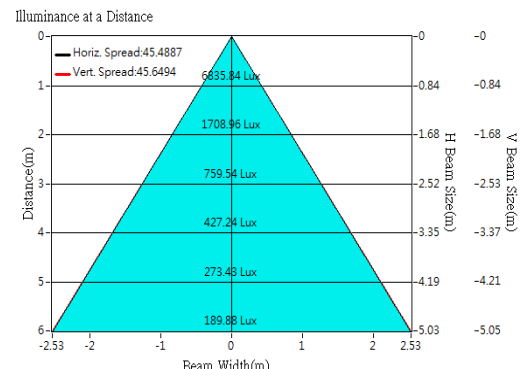


H: 5.5 mm

Illuminance At Distances



H:6.0 mm

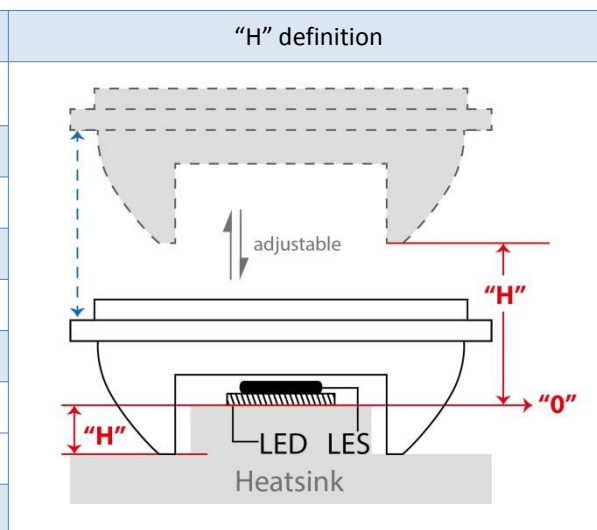


H: 5.5 mm

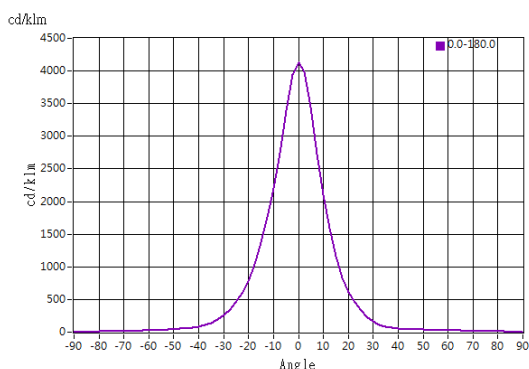


Optical Characteristics

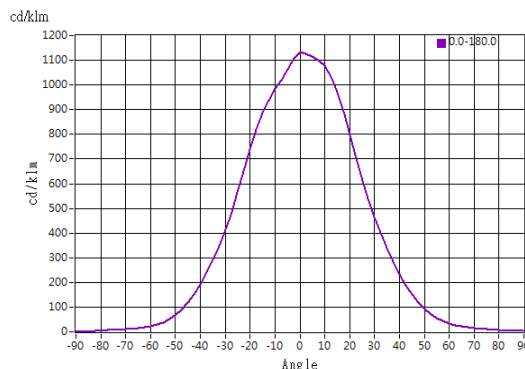
Model Number	CKO-ZU15-110025-9301
LED	CLU 048
LES / LED Size	Φ 22 mm
FWHM (D50)	21°-51°
Field Angle (D10)	49°-93°
H (distance)	5.5mm~5.5mm
Dimension	Φ =110 mm, Thickness=24.5 mm
Luminous Flux	6520 lm ~6864 lm (21° ~51 °) Measured @ 50.1 W
Material	PC / UL94V2



cd/klm

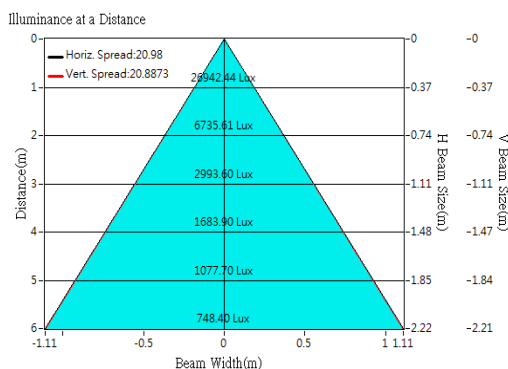


H: 5.5 mm

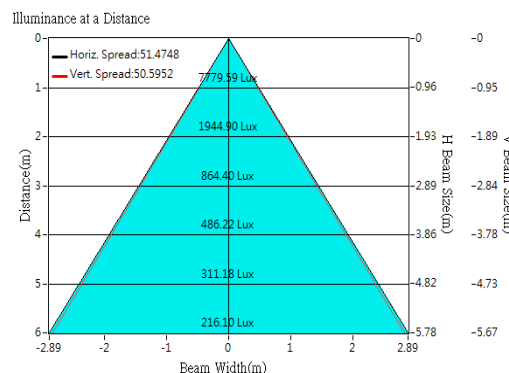


H:- 5.5 mm

Illuminance At Distances



H: 5.5 mm

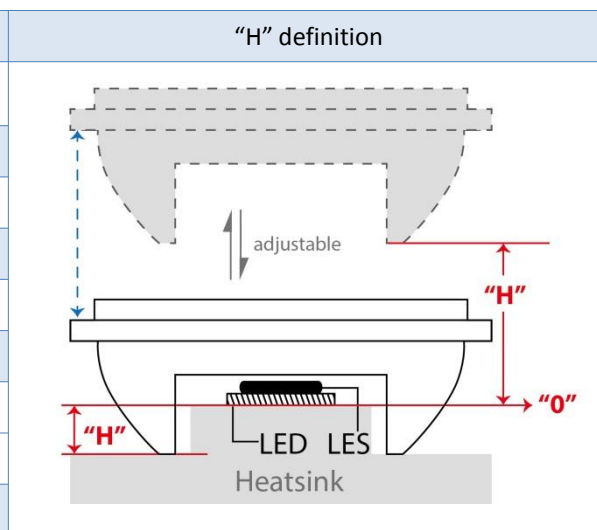


H:- 5.5 mm

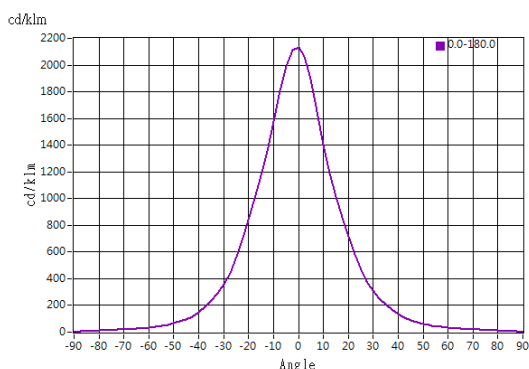


Optical Characteristics

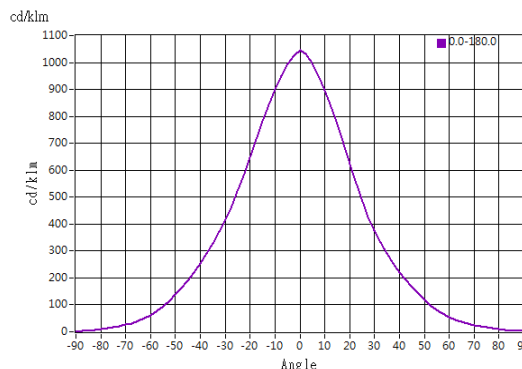
Model Number	CKO-ZU15-110025-9301
LED	CLL 050
LES / LED Size	Φ 32.8 mm
FWHM (D50)	31°-48°
Field Angle (D10)	71°-105°
H (distance)	4.0mm~4.5mm
Dimension	Φ =110 mm, Thickness=24.5 mm
Luminous Flux	5684 lm ~5920 lm (31° ~48 °) Measured @ 52.3 W
Material	PC / UL94V2



cd/klm

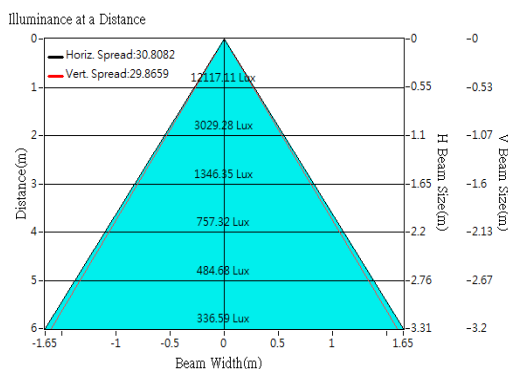


H: 4.0 mm

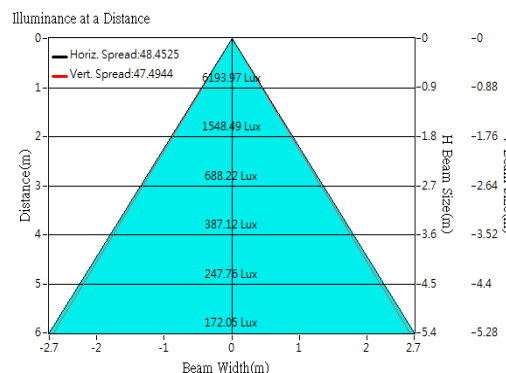


H:- 4.5 mm

Illuminance At Distances



H: 4.0 mm



H: -4.5 mm